



第23回東海ライブ研究会 症例集

Case 1 80's female

Target Lesion: RCA CTO

Diagnosis: OMI, AP

Prior intervention:

'15.12.16 EES (prox. LAD)

EES (prox. LCX)

POBA (mid. LCX)

Coronary risk factor:

HT, Dyslipidemia

eGFR: 69.8

Syntax score: 7

Final CAG findings: '15.12.03

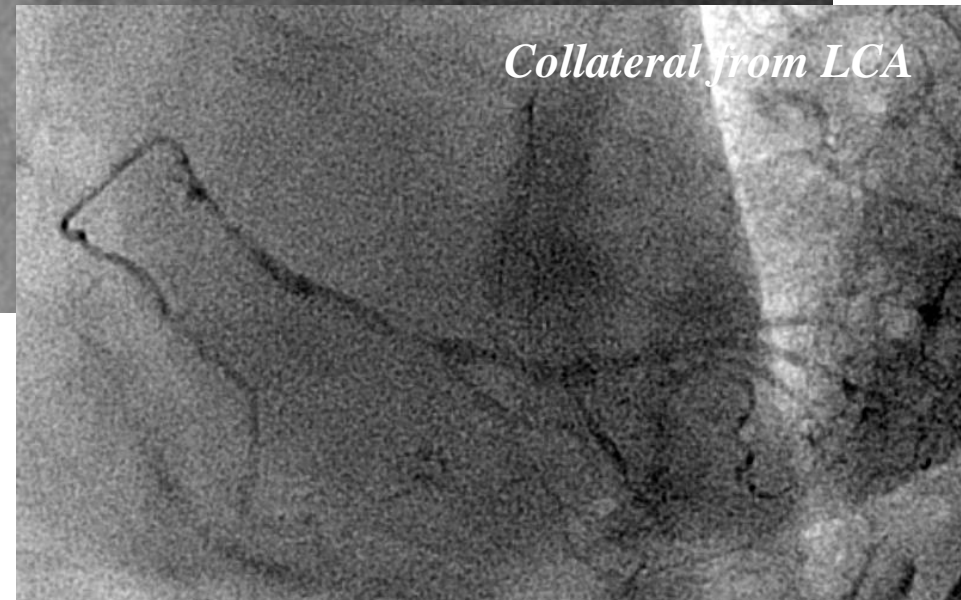
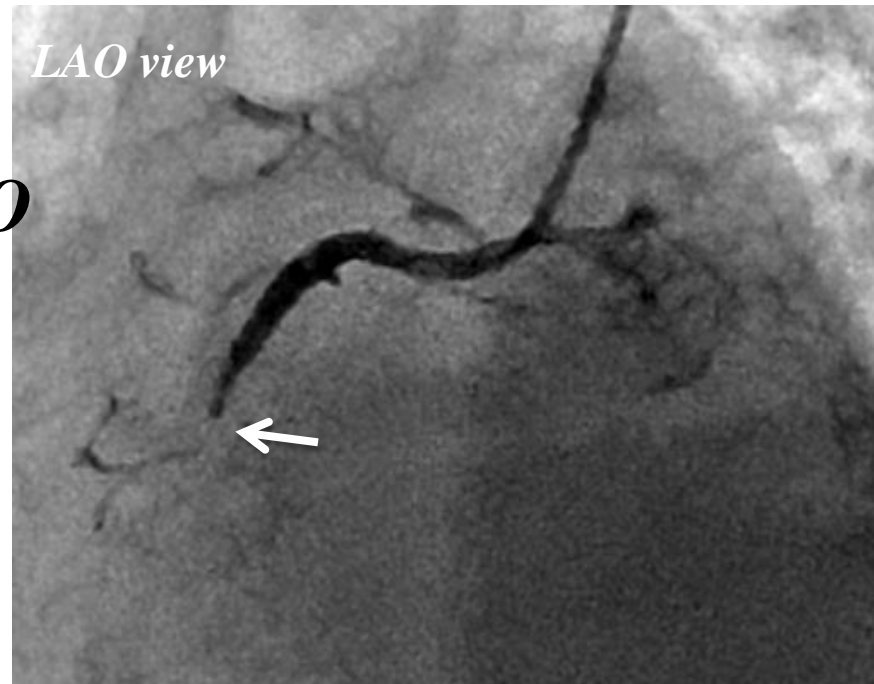
CAG: mid. RCA 100%,

prox. LAD 75%→0%(Stent)

prox. LCX 99%→0%(Stent)

mid. LCX 75% → 25%(POBA)

LV EF(UCG): 48%



Case 1 MDCT

Prox.Ref. 3.2 × 3.0mm

MLD Vessel
2.5x2.5mm

Spotty calc.

CT number:
56(±24)HU

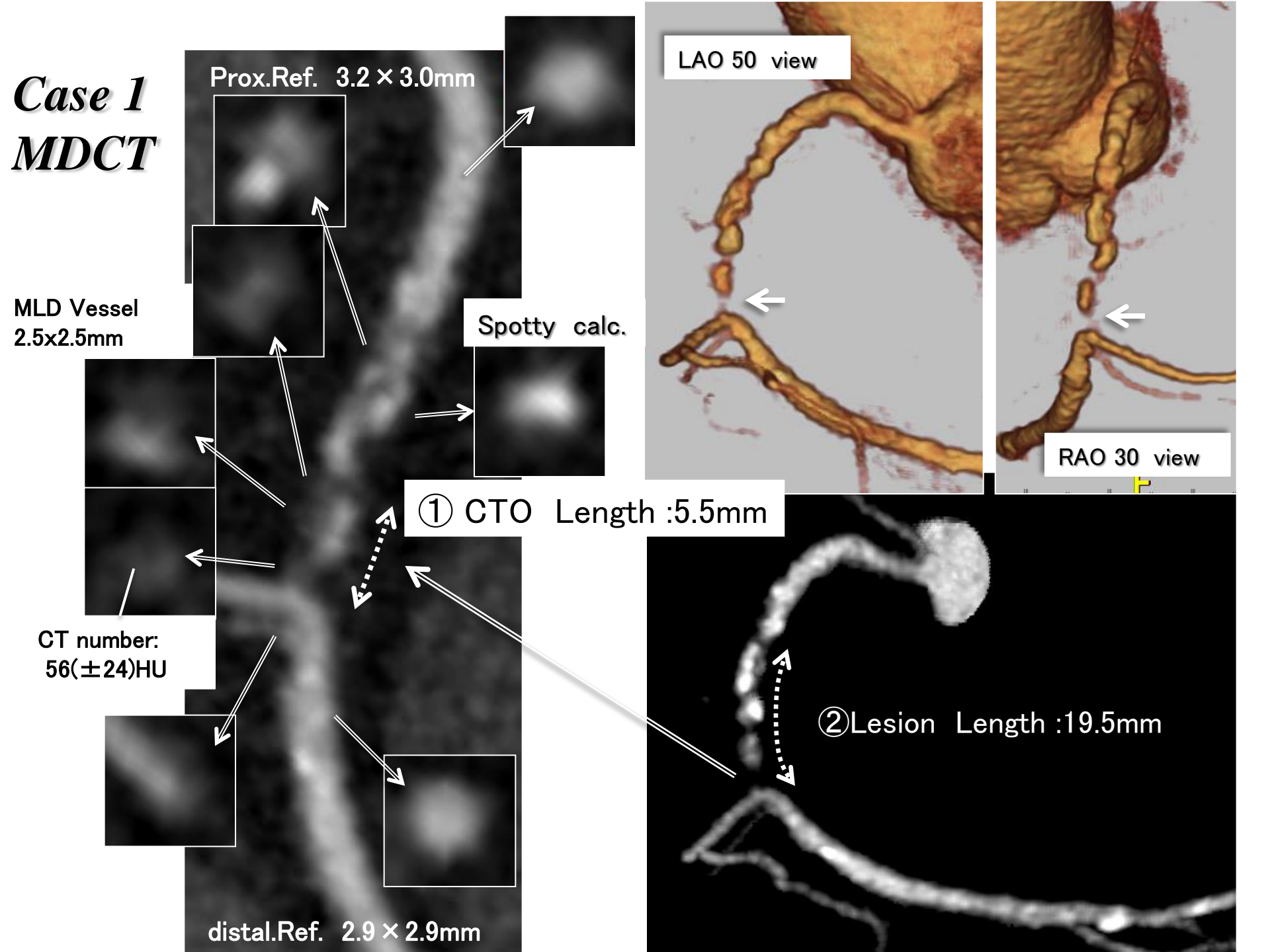
distal.Ref. 2.9 × 2.9mm

LAO 50 view

RAO 30 view

① CTO Length :5.5mm

② Lesion Length :19.5mm



Case 2 80's female

Target Lesion: LMT bifur.

Diagnosis: AP

**Prior intervention:
none**

Coronary risk factor:

Dyslipidemia, Family history

eGFR: 67.1

Syntax score: 49

Final CAG findings: '15.11.05

CAG: LMT-ost. LAD 90%,

ost. LCX 50%

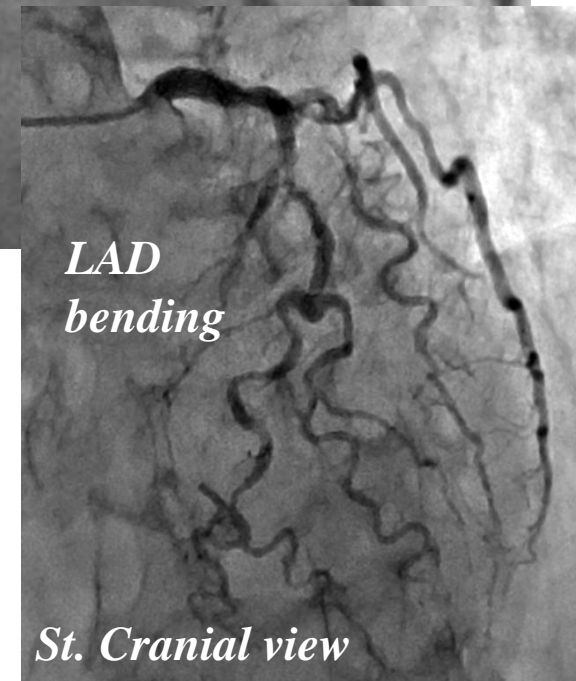
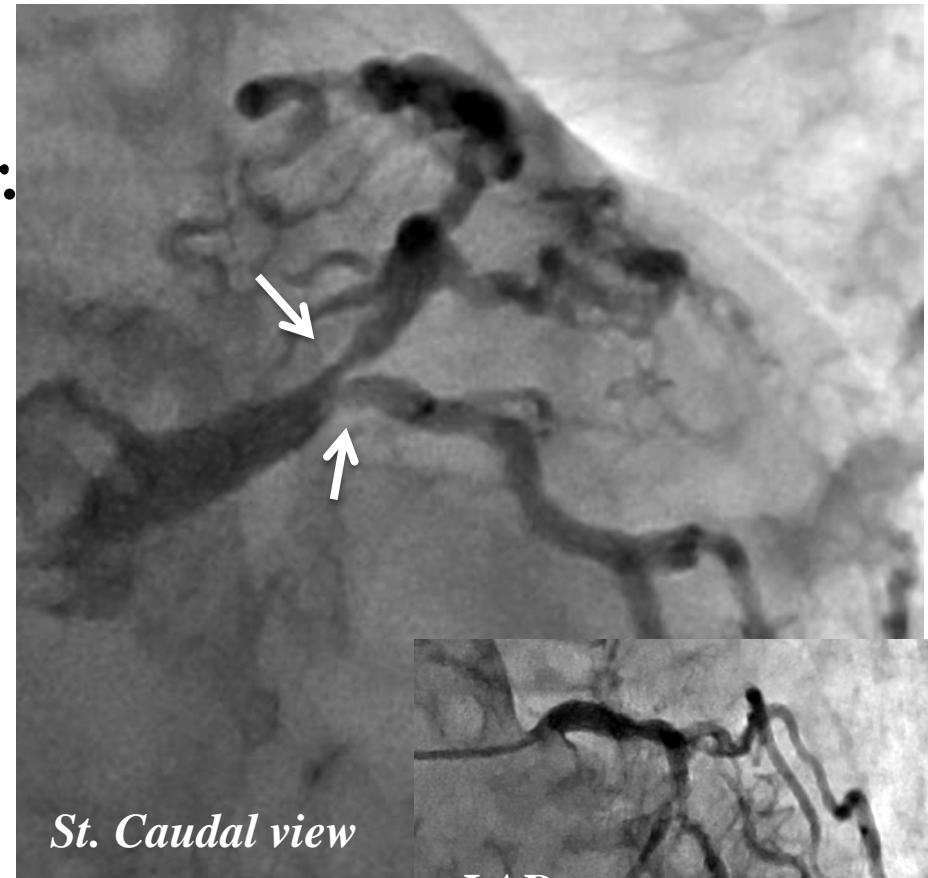
prox. LAD 75%

mid.-dis. LAD diffuse 75%(bending+)

1st diagonal 90%

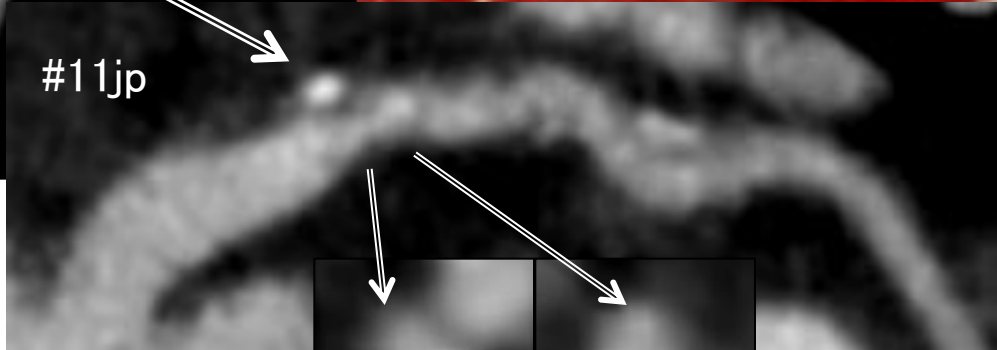
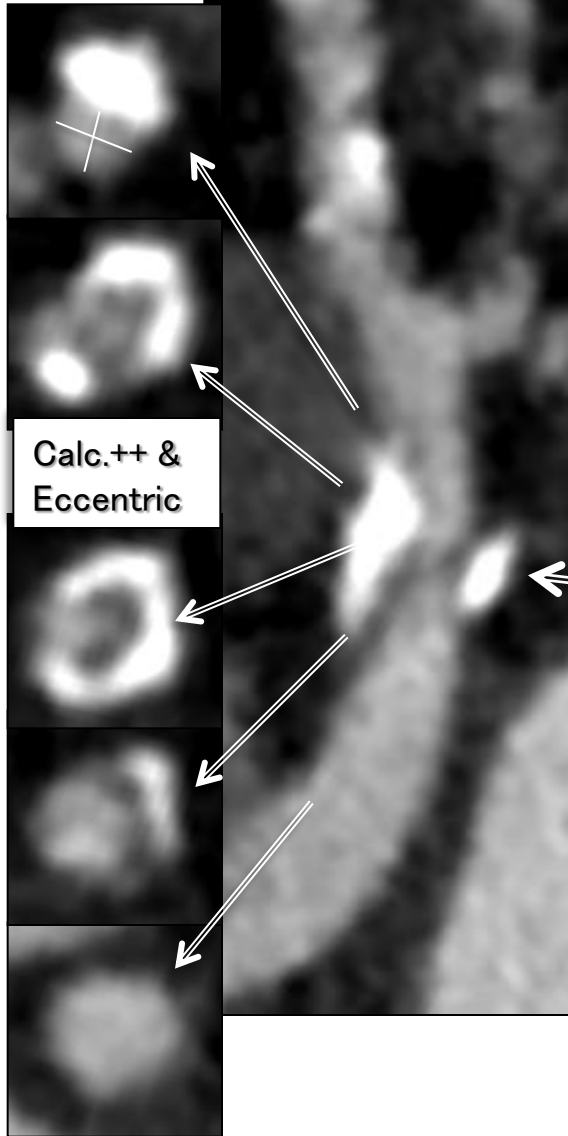
PD branch 90%

LV EF(UCG): 65.2%



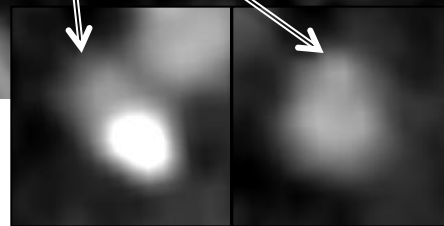
Lumen
3.0 × 1.6mm

Case 2 MDCT



#11jp

Lumen 1.8 × 1.7mm

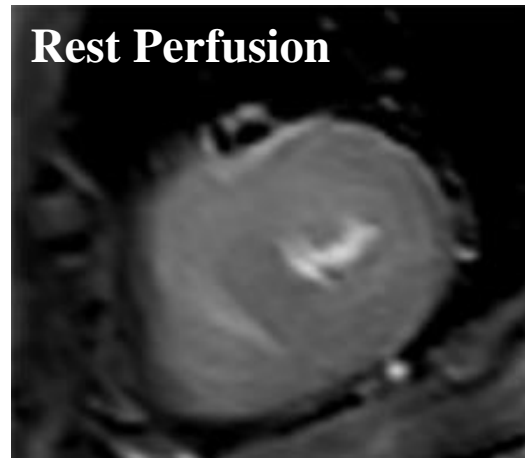


3.0 × 2.8mm

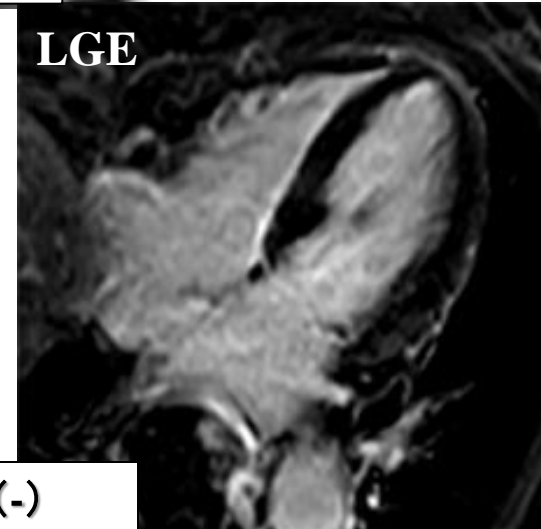
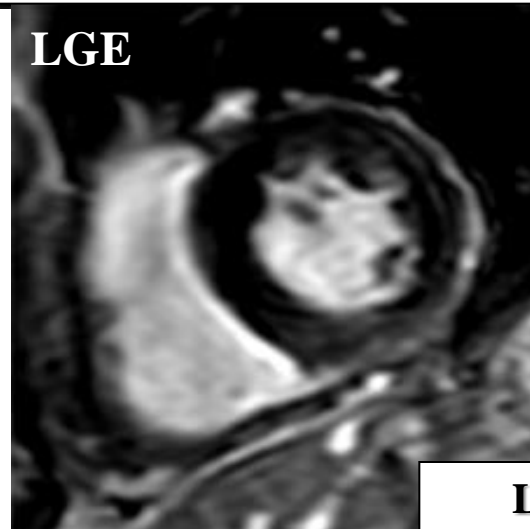
Prox.Ref. 4.5 × 4.3mm

Case 2 80's female

Target Lesion: LMT bifur.



Anteroseptal&Inferior:Myocardial ischemia (+)



LGE (-)

Case 3 70's male

Target Lesion: LAD CTO

Diagnosis: OMI, AP

Prior intervention:

**'16.02.02 EES (mid RCA)
EES (dis. RCA)**

Coronary risk factor:

DM, HT, Dyslipidemia

eGFR: 53.9

Syntax score: 30.5

Final CAG findings: '16.02.02

CAG: prox. LAD 100%

mid LCX 100%

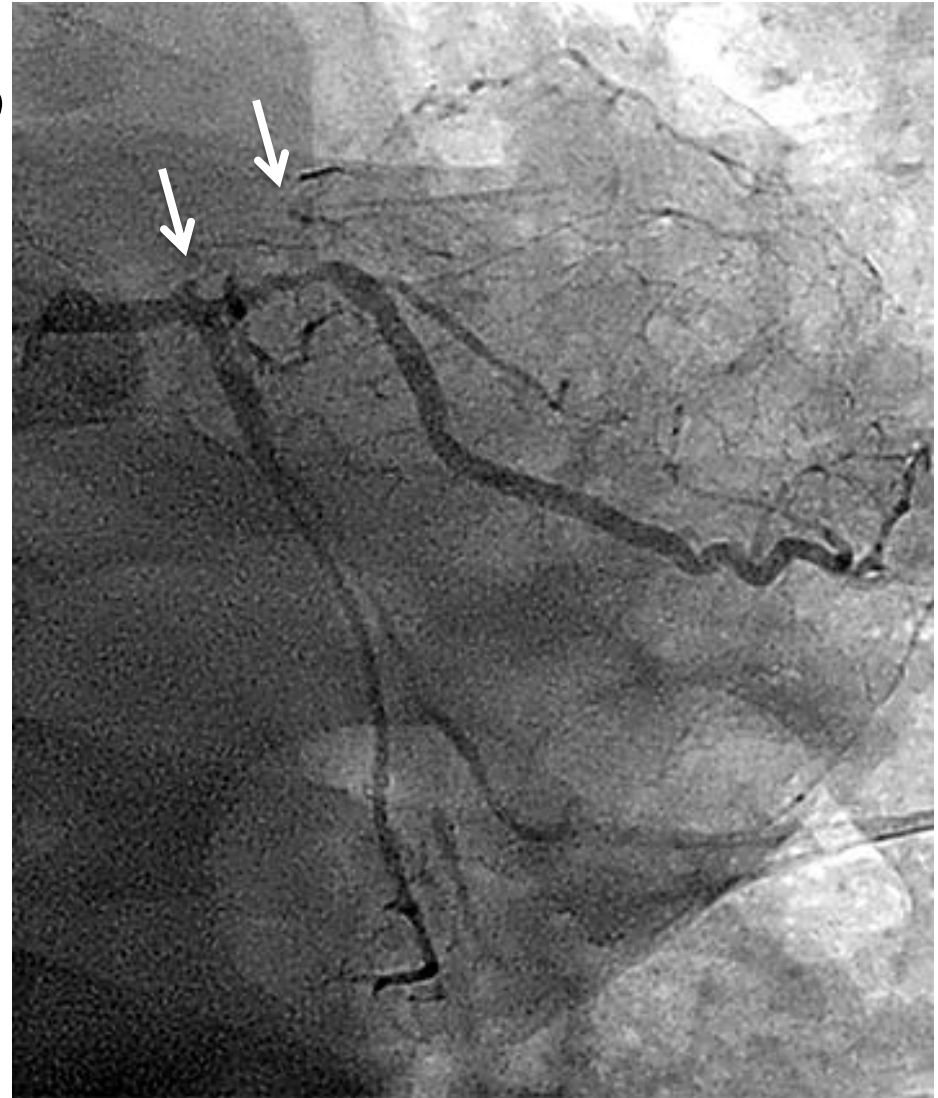
mid RCA 90%→0%(stent)

dis. RCA 75%→0%(Stent)

LV EF(UCG): 41%

moderate AS

(Vmax1.65m/s, mPG6mmHg)



Case 4 80's male

**Target Lesion: LAD subtotal
& bifurcation**

Diagnosis: OMI, AP, CKD

Prior intervention:

'15.04.13 EES (mid. RCA)

Coronary risk factor:

Dyslipidemia, Current smoking

eGFR: 40.7

Syntax score: 22

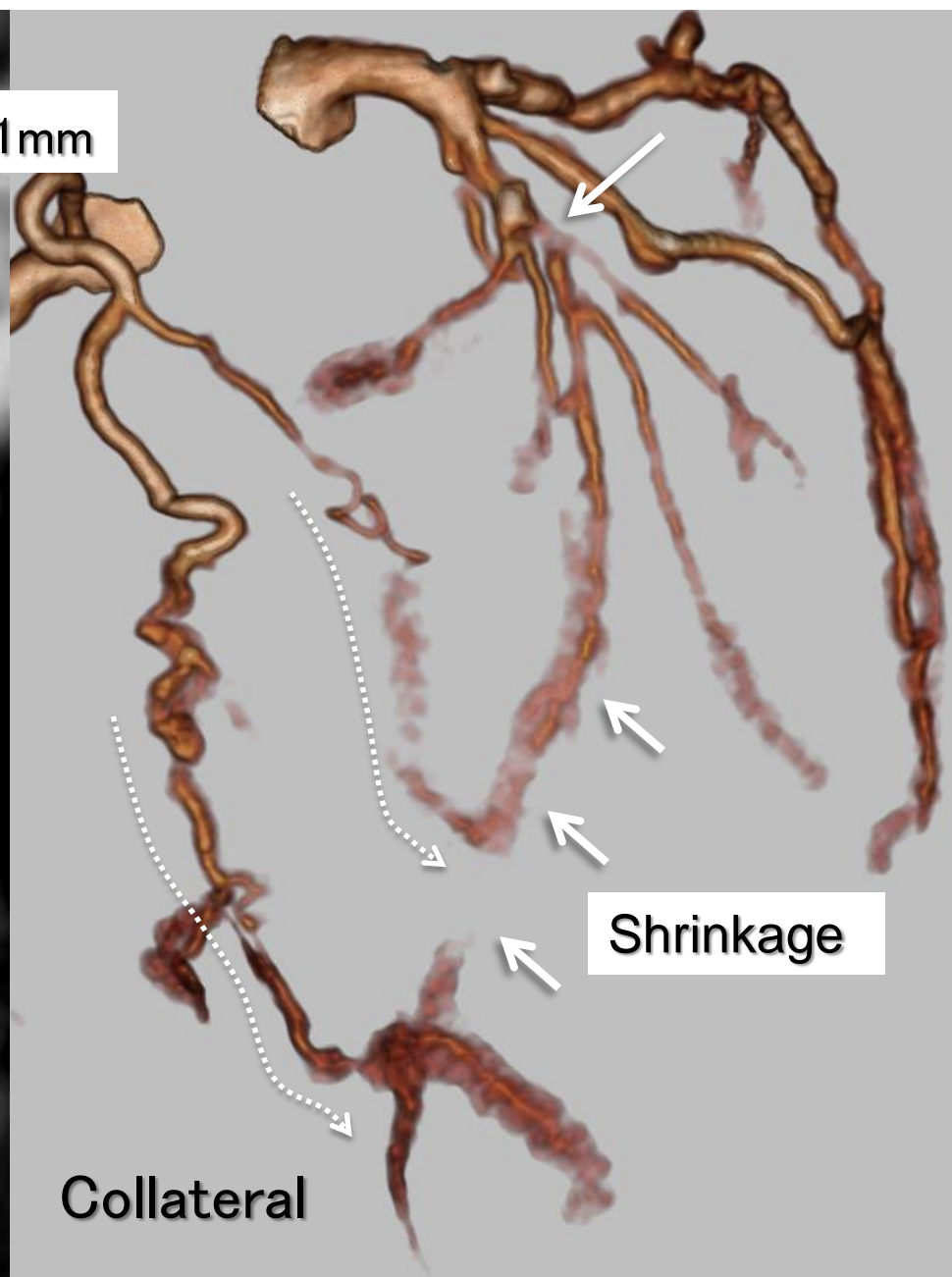
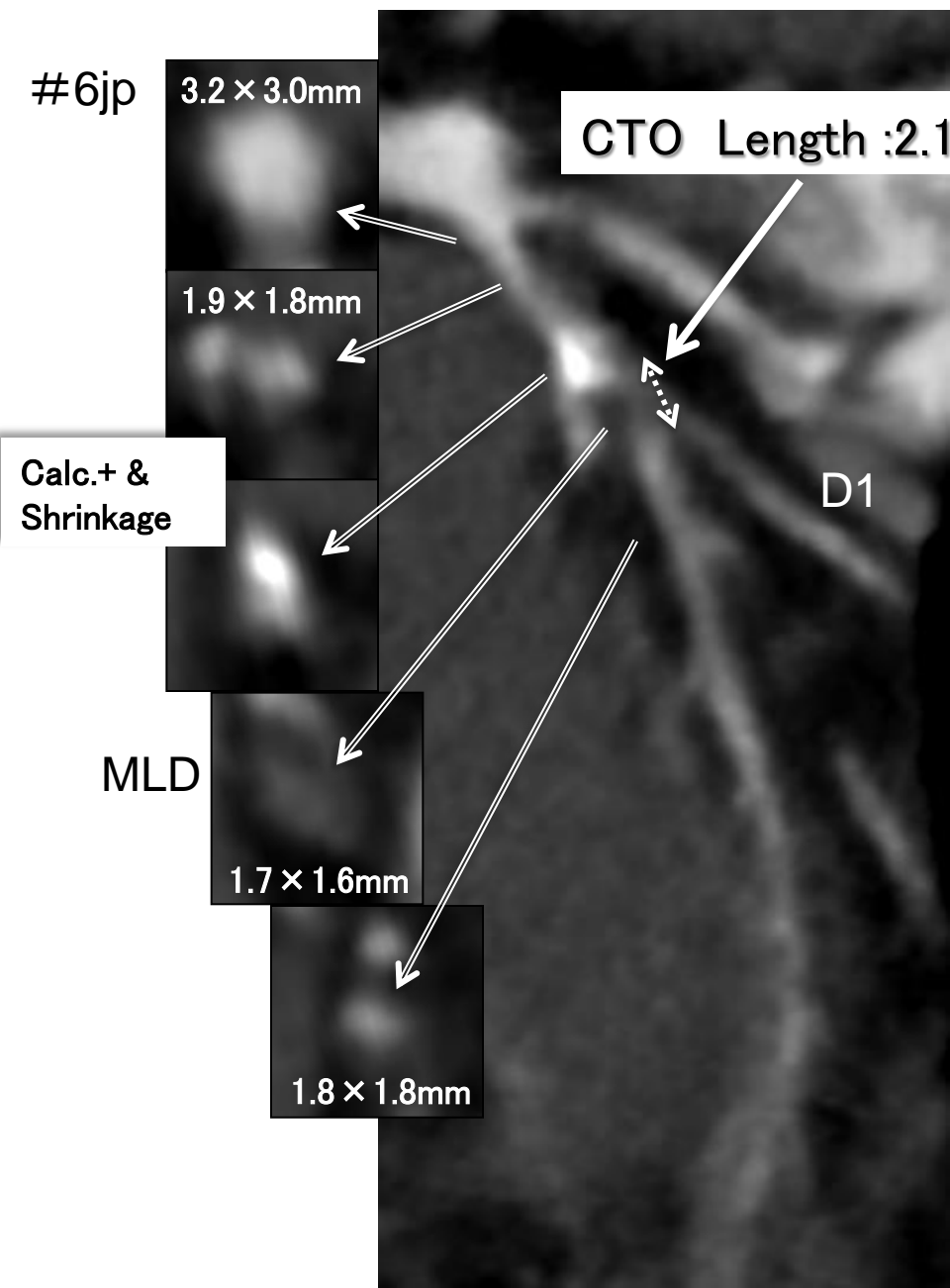
Final CAG findings: '15.10.22

**CAG: prox. LAD subtotal
2nd diagonal subtotal,
1st diagonal 75%,
mid. LCX 75%,
PD branch 75%**

LV EF(UCG): 36%

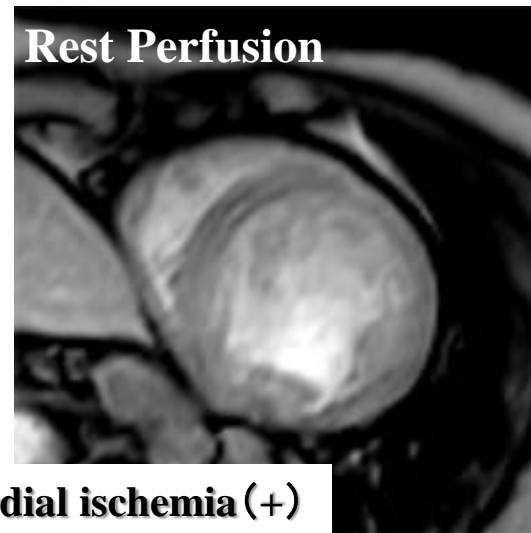
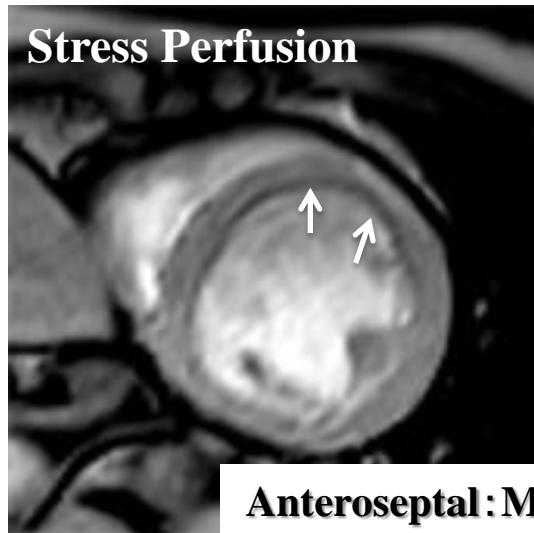


Case 4 MDCT

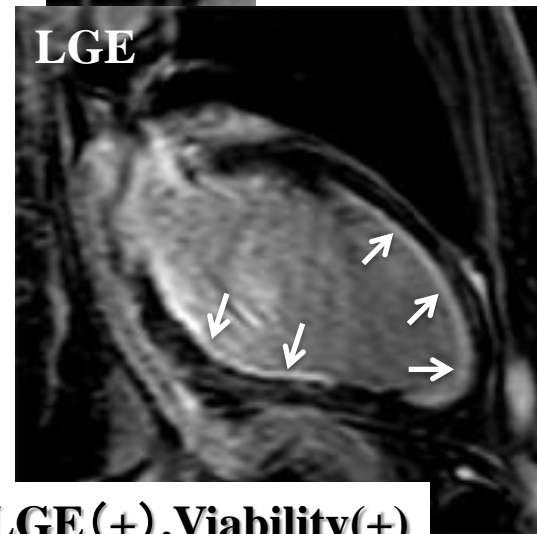


Case 4 80's male

Target Lesion: LAD subtotal & bifurcation



Anteroseptal: Myocardial ischemia (+)



Anteroseptal & Inferior: LGE (+), Viability (+)

Case 5 70's male

Target Lesion: LMT bifurcation, mid LAD

Diagnosis: post CABG, post CAS

Prior intervention:

'04.12.04 CAS (Lt.ICA)

'04.12.04 CABG

(LITA-LAD, Ao-SVG-LCX, Ao-SVG-RCA), other hospital

Coronary risk factor:

HT, Dyslipidemia, smoking history

eGFR: 79.6

Syntax score: 23

Final CAG findings: '15.11.24

Native: ost. LAD 75%,

LMT distal 50%, ost. LCX:50%

mid. LAD 75%, 1st diagonal 100%

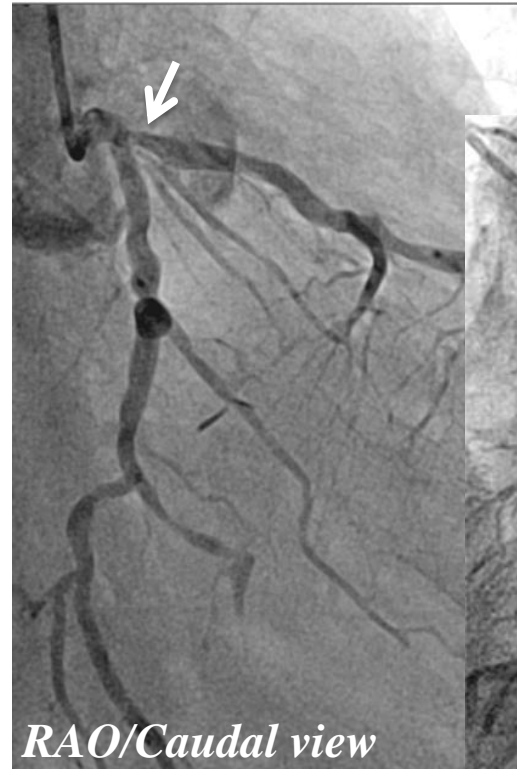
mid. LCX 75%, OM :75%

mid. RCA 75%

Graft : LITA-LAD occlusion, Ao-SVG-RCA patent

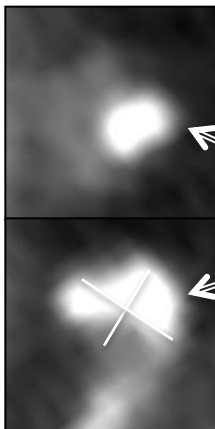
Ao-SVG- LCX patent

LV EF(UCG): 60.6%

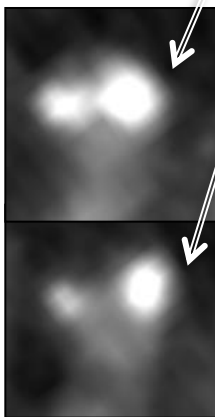


Case 5 MDCT

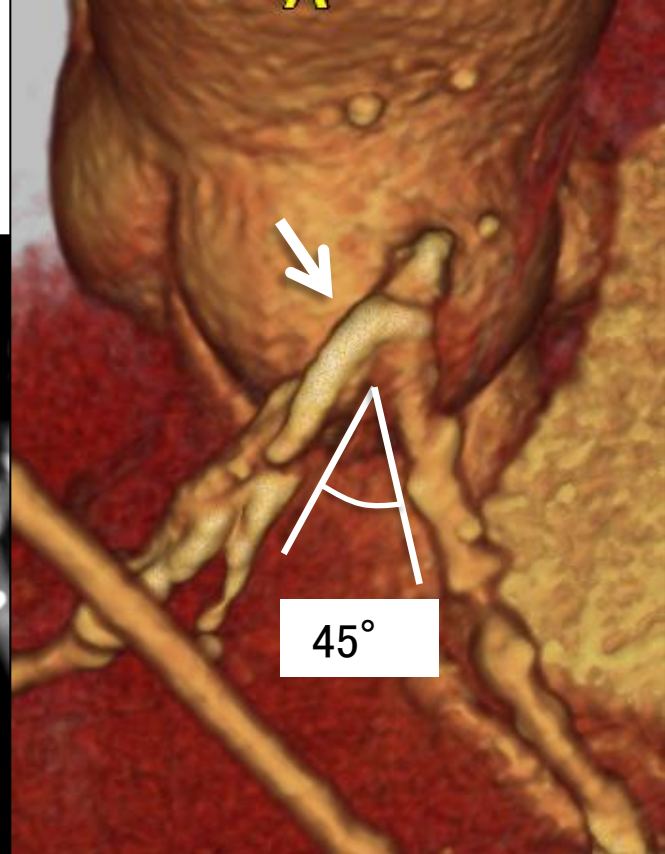
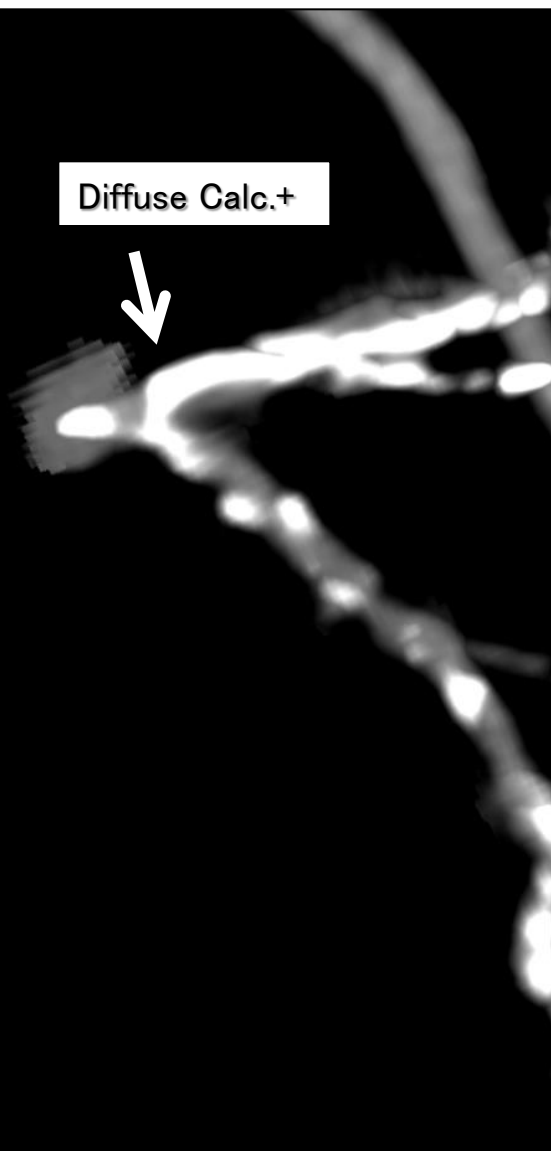
LMT. Lumen
3.1 × 2.5mm



MLD Vessel
3.2 × 3.1mm



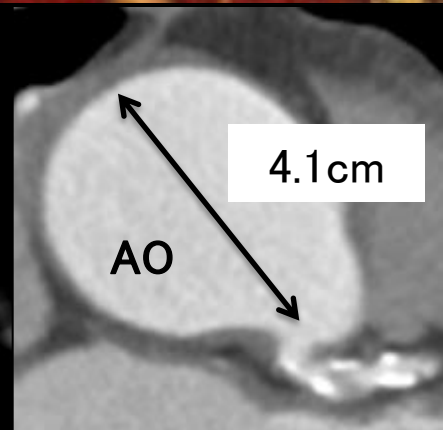
Diffuse Calc.+



45°

4.1cm

AO



distal.Ref.
3.3 × 3.2mm

Case 6 80's female

Target Lesion: Ost. RCA calc.

mid. RCA, dis. RCA

Diagnosis: AP, AS(AVA:0.73cm²)

Prior intervention:

'02.09.17 BMS(prox. LAD)

'02.09.17 BMS(LMT-prox. LAD)

Coronary risk factor:

HT, Dyslipidemia

eGFR: 67.0

Syntax score: 16

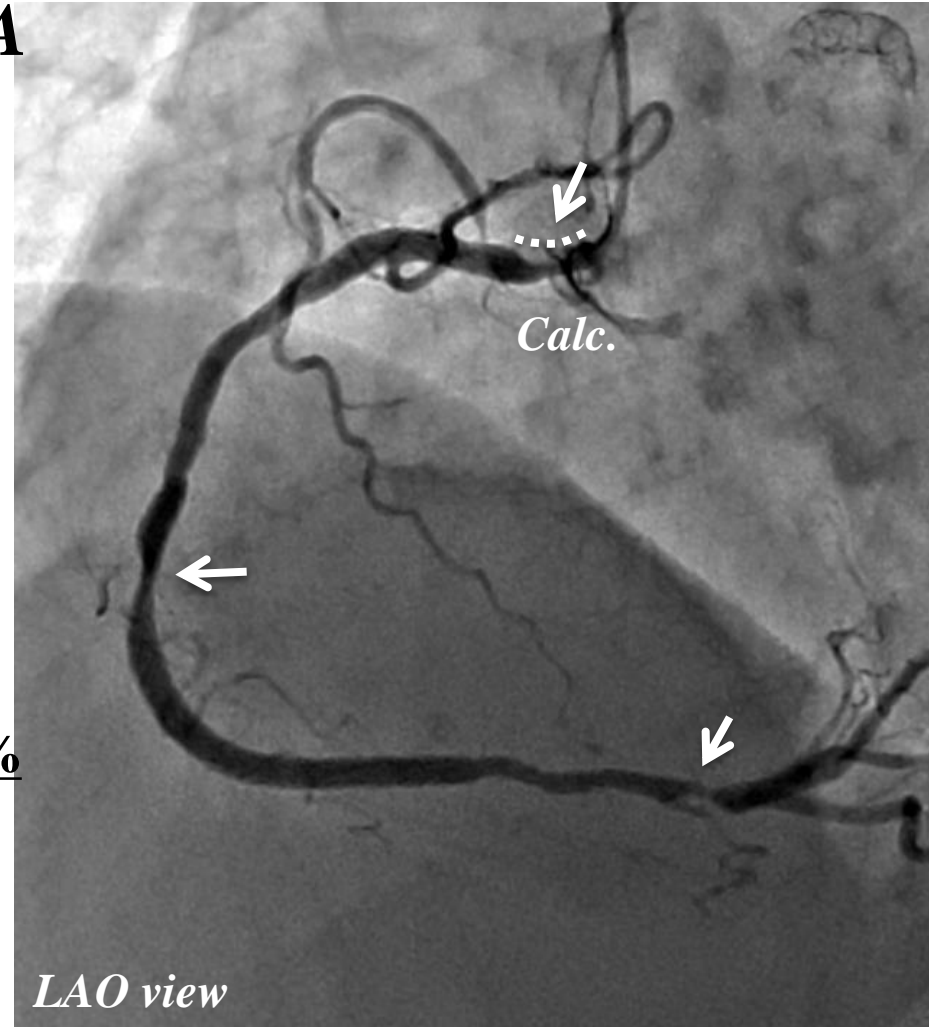
Final CAG findings: '16.01.12

CAG: Ost. RCA 90%,

mid. RCA 75%, dis. RCA 90%

1st diagonal 90%, mid LCX 50%

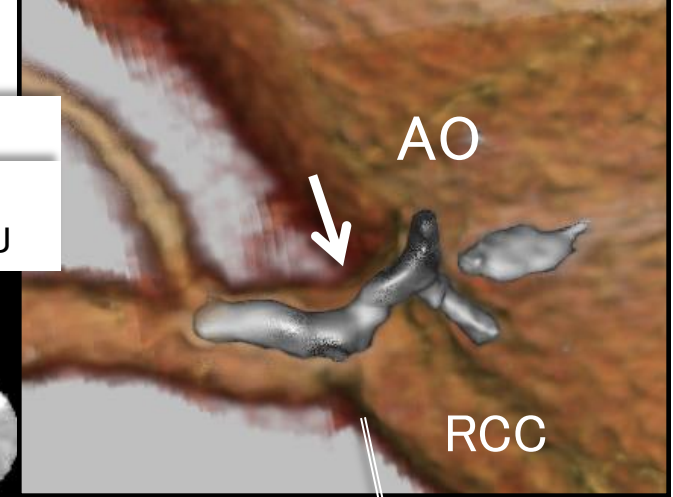
LV EF(UCG): 72%



Case 6 MDCT

Prox.Ref.
3.2 × 3.0mm

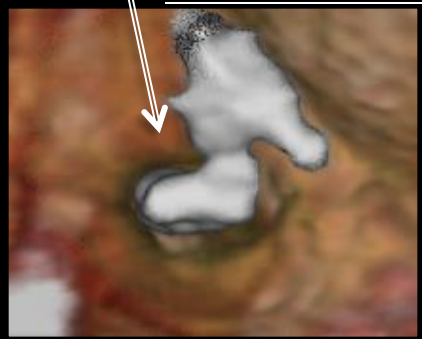
Massive Calc.+
Calc. CT number
Ave:880(SD39)HU



CT number
Ave:11(SD19)HU

3.2 × 3.1mm

Prox.Ref.
3.3 × 3.0mm

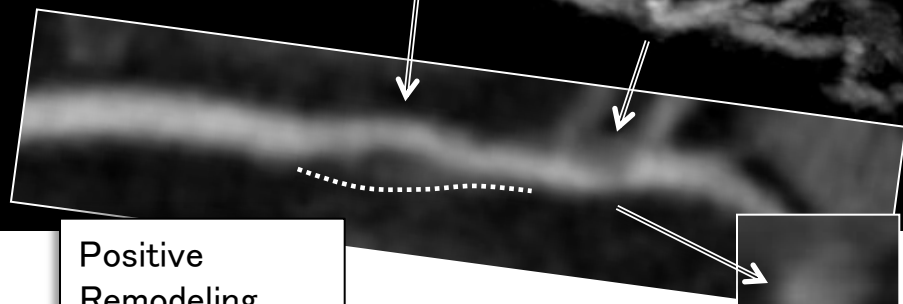


Vessel 4.8 × 4.3mm

4.3 × 3.3mm

CT number
Ave:38(SD7.8)HU

Positive Remodeling
(index:1.85)



Dis.Ref.
3.1 × 3.0mm

Positive Remodeling
(index:1.45)

Case EVT 60's male

Target Lesion: Rt. SFA CTO

Diagnosis: PAD, AP

ABI: Rt: 0.61, Lt:0.88 ('15.12.29)

Fontaine: 2

Rutherford: 3

Prior intervention:

'15.12.28 EVT (Stent)(Rt. CIA)

EVT (Stent)(Lt. EIA)

EVT (Stent)(Lt. SFA CTO)

Risk factor:

HT, Current smoking

eGFR: 69.9

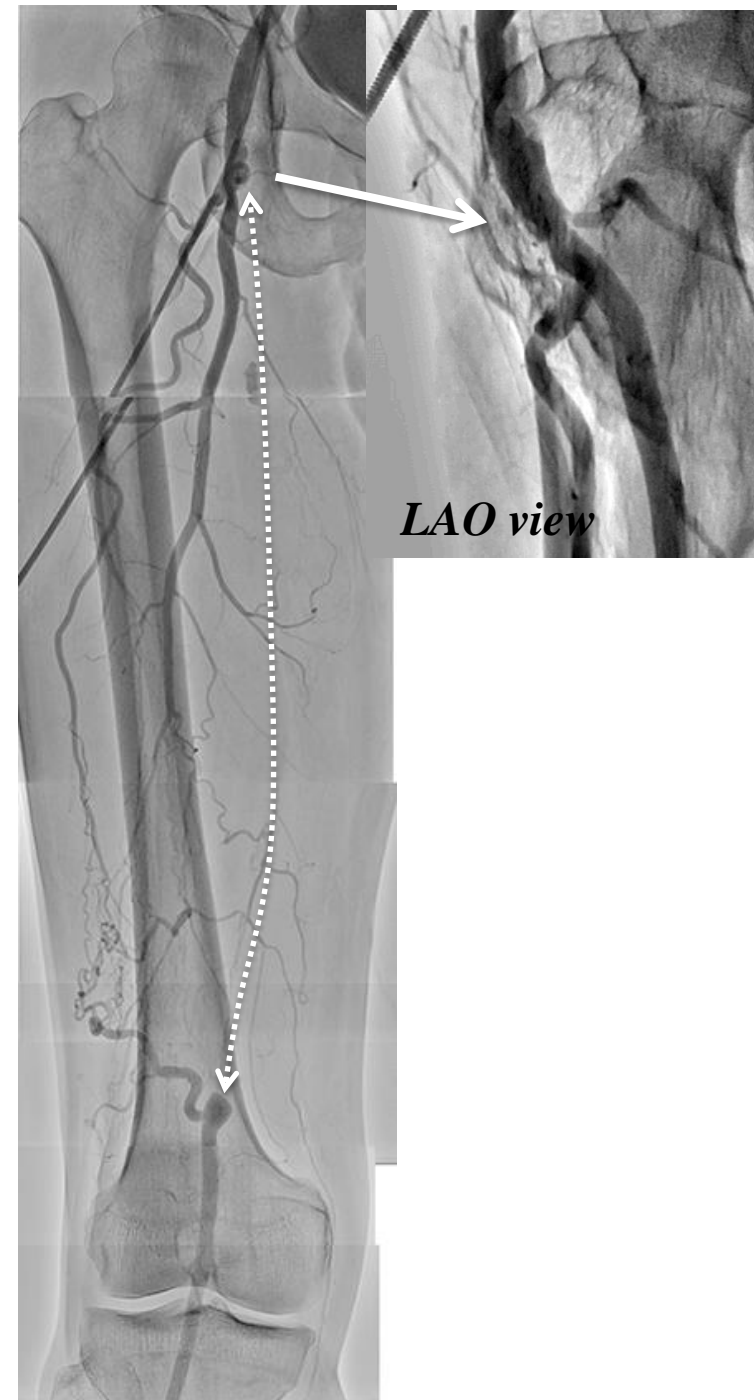
AOG Findings: '15.12.16

Rt: CIA 90% →0%(Stent)

SFA 100%

Lt: EIA 90% →0%(Stent)

SFA 100% →0%(Stent)



Case EVT 60's male

Target Lesion: Rt. SFA CTO

