

第24回東海ライブ研究会 症例集

Case 1 60's male

Target Lesion: RCA CTO

Diagnosis: OMI, AP, CHF

Prior intervention:

'16.12.26 EES (prox. LAD ACS)

Coronary risk factor:

DM

eGFR: 63.8

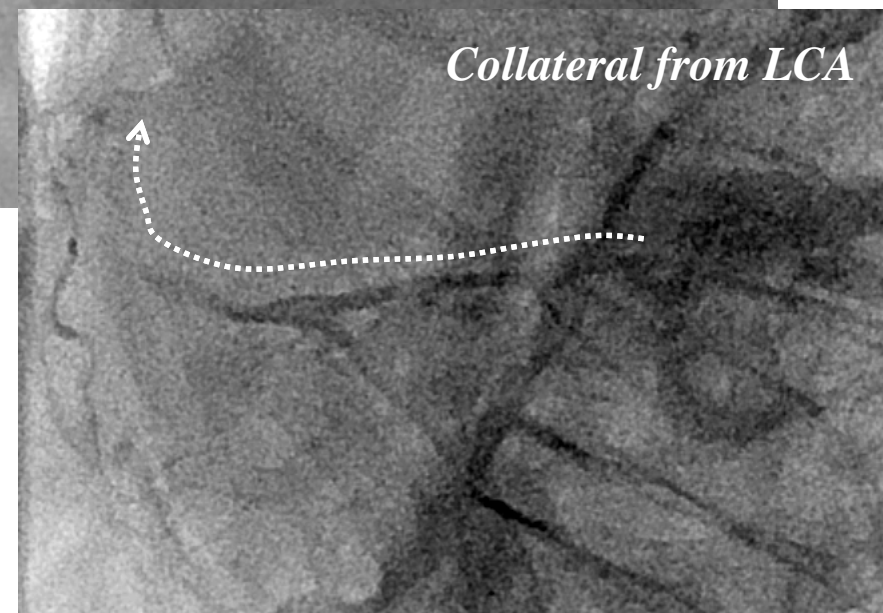
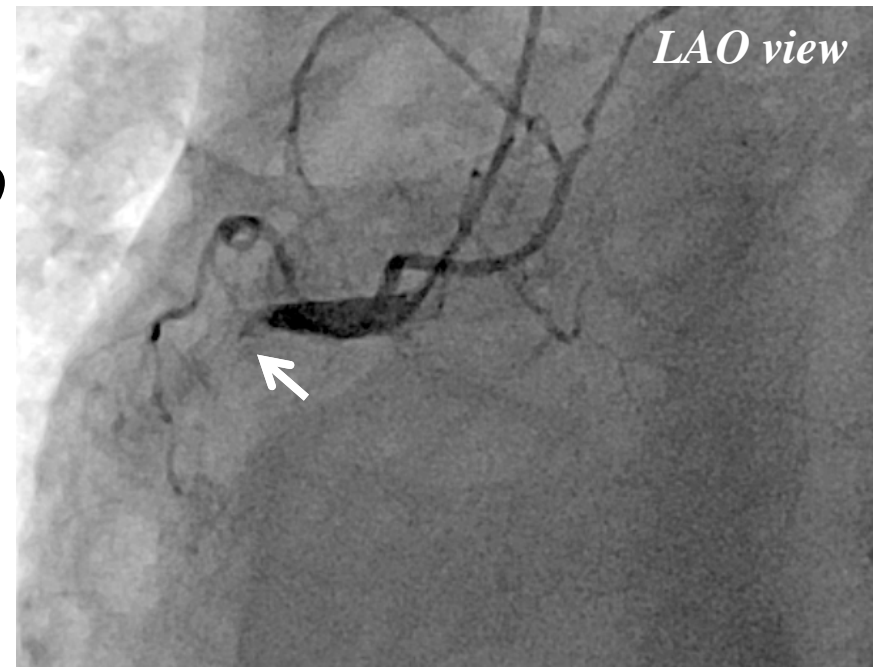
J CTO score: 1

Syntax score: 18

Final CAG findings: '16.12.17

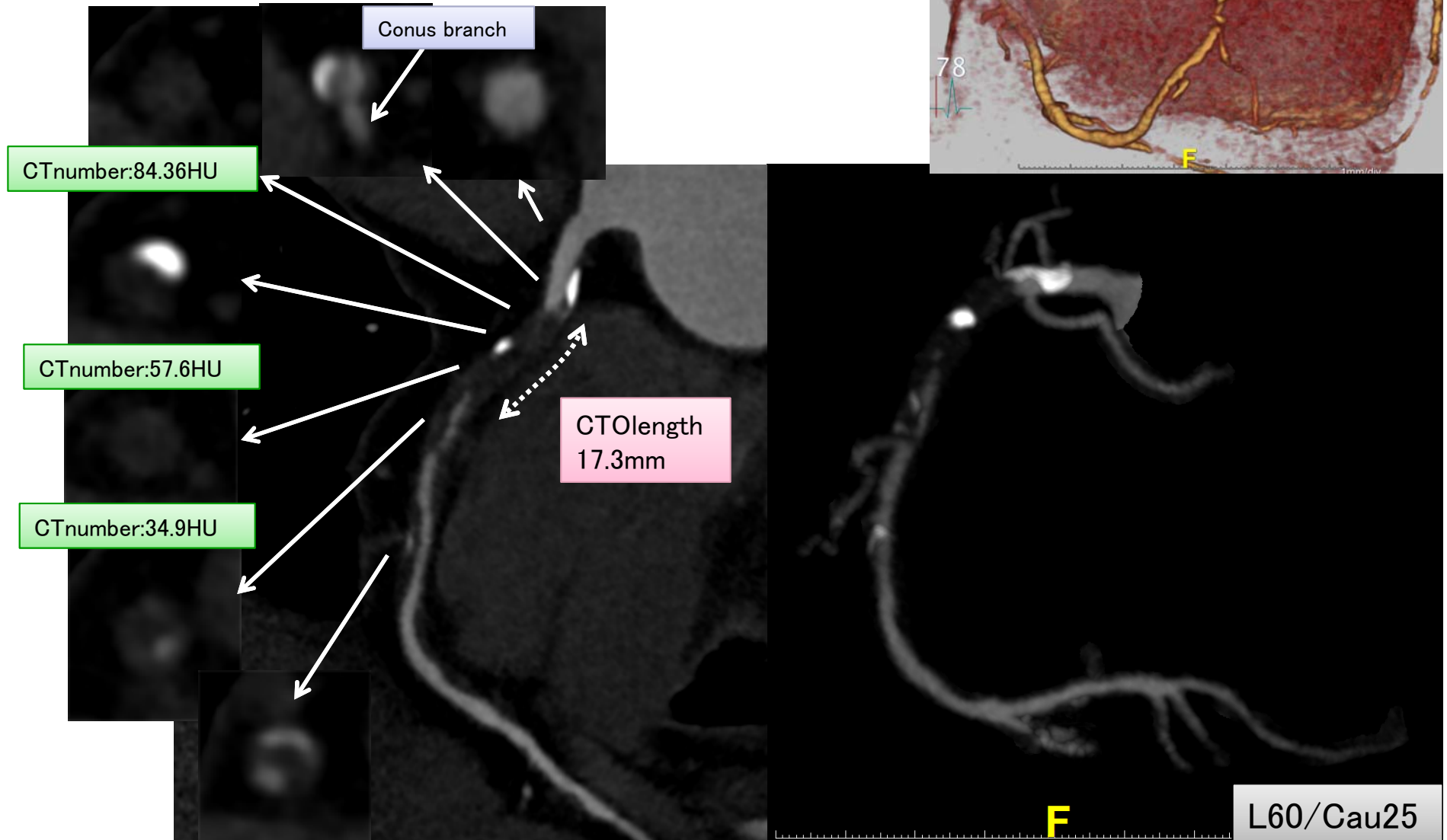
**CAG: prox. RCA 100%,
prox. LAD 75%→0%(Stent)
prox. LCX 75%(FFR:0.93)**

LV EF(UCG): 42%



Case 1 60's male

Target Lesion: RCA CTO

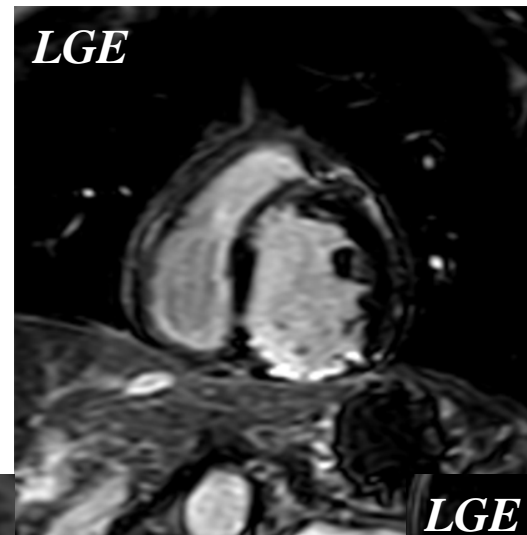


Case 1 60's male

Target Lesion: RCA CTO



Inferior: Myocardial ischemia (-)



LGE(+), Viability(-)

Case 2 50's male

Target Lesion: RCA CTO

Diagnosis: EAP, CRF

Prior intervention:

none

Coronary risk factor:

HT, Dyslipidemia, current smoking

eGFR: 6.0(CRF on HD)

J CTO score: 2

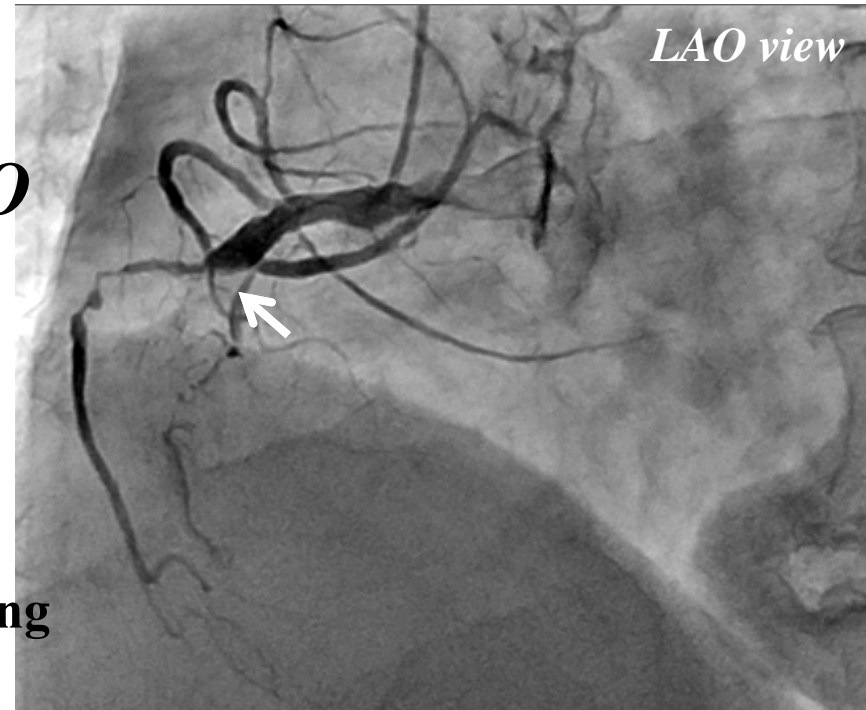
Syntax score: 10

Final CAG findings: '17.01.13

CAG: prox. RCA 100%,

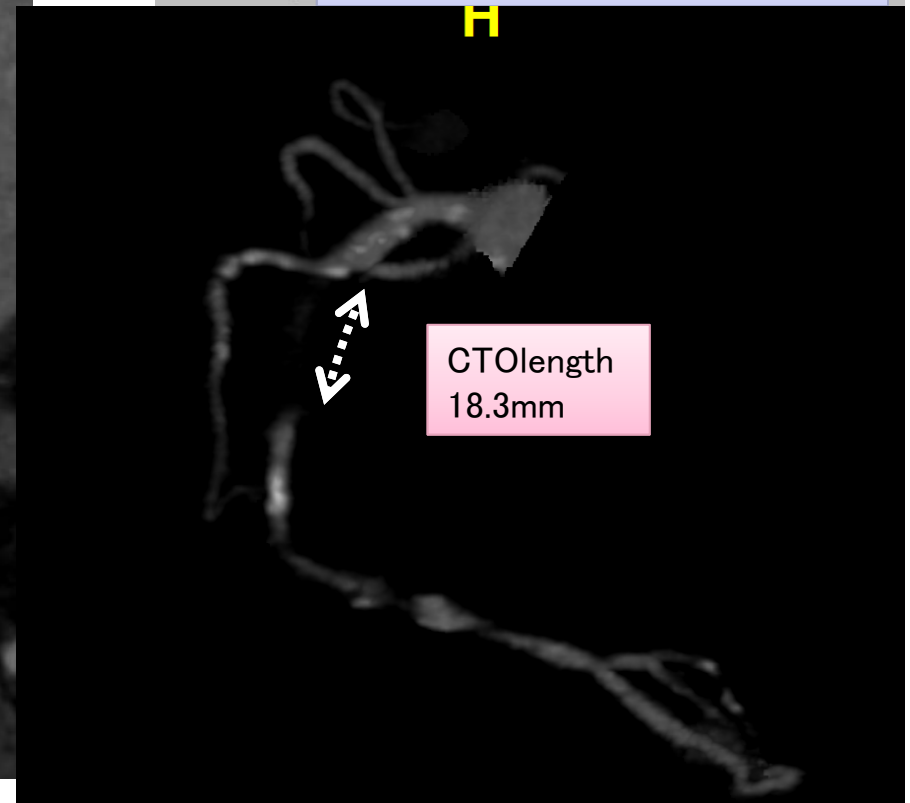
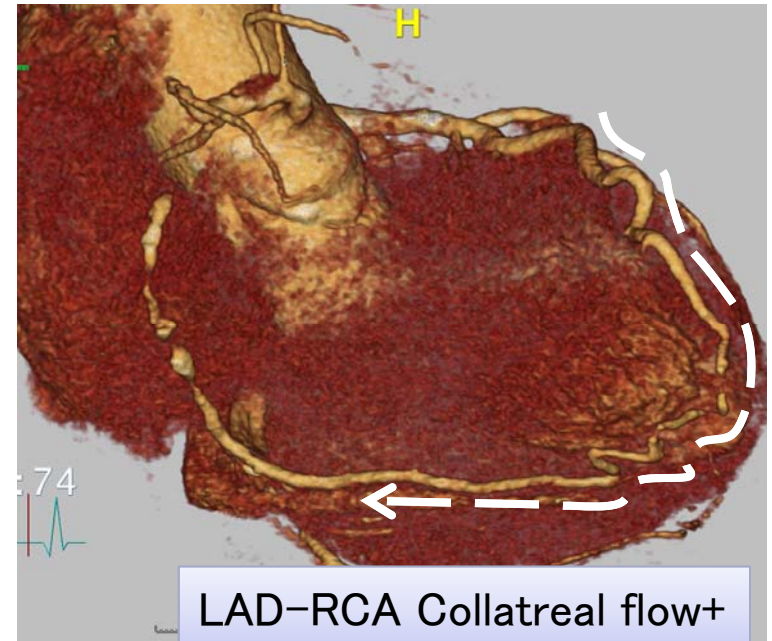
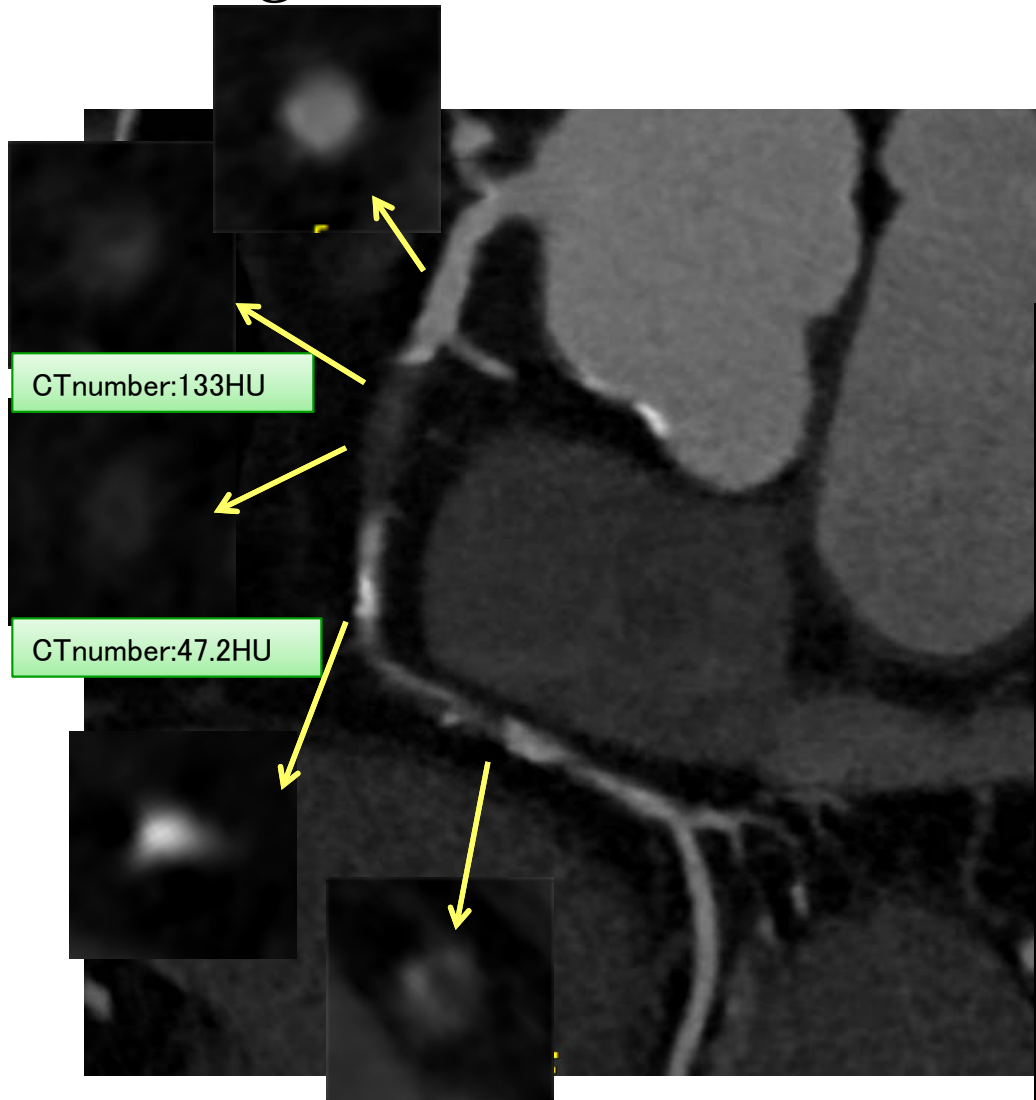
OM 90%

LV EF(UCG): 45%



Case 2 50's male

Target Lesion: RCA CTO



Case 3 60's male

Target Lesion: RCA CTO

Diagnosis: OMI, AP, AS(AVA:1.05cm²),
MSR(MR:II, MVA:1.83cm²),
Carotid A stenosis, CRF

Prior intervention:

'06.10.19	PCI failure (dis. RCA CTO)
'06.11.10	PCI failure (dis. RCA CTO)
'06.12.01	SES (mid. LAD) , other hospital
'16.12.21	RA+DCB (mid. LAD ISR)

Coronary risk factor:

HT, Dyslipidemia, Family history

eGFR: 5.9(CRF on HD)

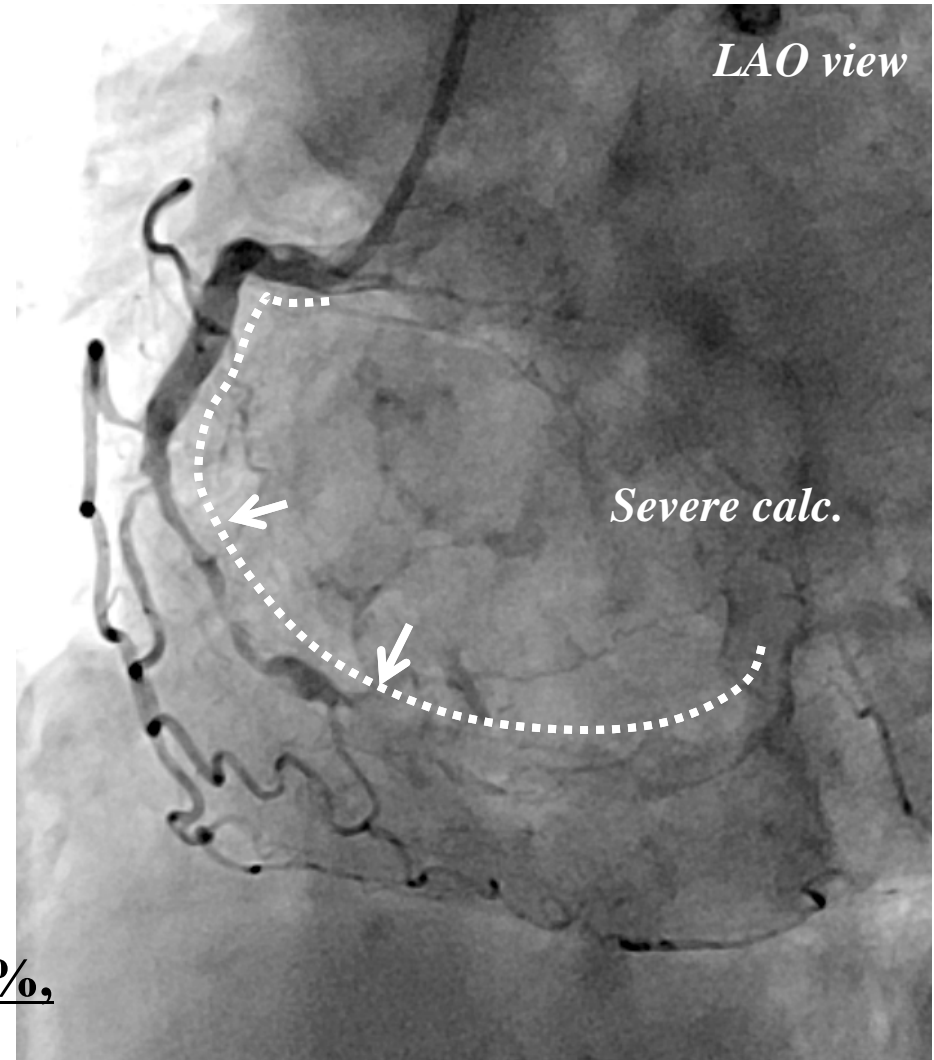
J CTO score: 3

Syntax score: 39

Final CAG findings: '16.12.21

CAG: mid. RCA 99%, dis. RCA 100%,
mid. LAD 75%→25%(Rota+DCB)
diagonal 90%, ost. LCX 75%

LV EF(UCG): 50%



Case 4 60's male

Target Lesion: Ost. LAD

Diagnosis: AP, CRF

Prior intervention:

'14.09.12 EES (mid. LCX)

'16.01.19 EES (prox. LAD)

POBA (2nd diagonal)

Coronary risk factor:

DM, HT, current smoking

eGFR: 9.2 (CRF on HD)

Syntax score: 17

Final CAG findings: '16.12.20

CAG: ost. LAD 75%

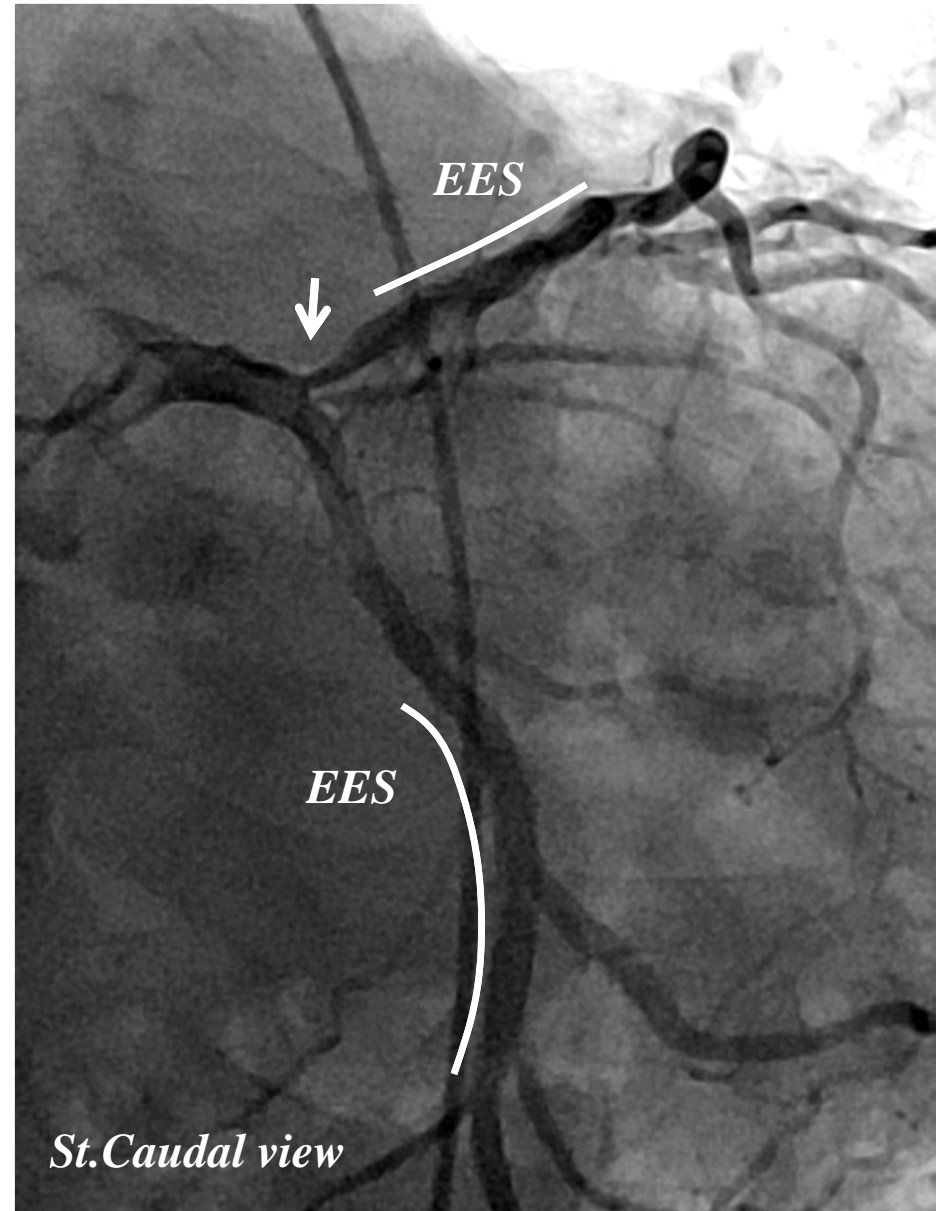
(FFR:0.72. iFR:0.83),

mid. LAD 50%,

prox. RCA 50-75%,

PD branch 75%

LV EF(UCG): 46%



Case 5 60's male

Target Lesion: LAD bifurcation

Diagnosis: AP, CHF, CRF

Prior intervention:

'00.12.22	CB	(mid. LAD)
	POBA	(AV branch)
'01.06.30	CB	(mid. LAD)
'13.08.29	BES	(mid. RCA, dis. RCA)
'17.01.13	CB	(prox. RCA)
	DCB	(mid. RCA ISR, AV branch)

Coronary risk factor:

DM, HT, Dyslipidemia, Current Smoking

eGFR: 4.5 (CAPD)

Syntax score: 27

Final CAG findings: '17.01.04

CAG: mid. LAD 75%(FFR:0.77),

1st & 2nd diagonal 90%

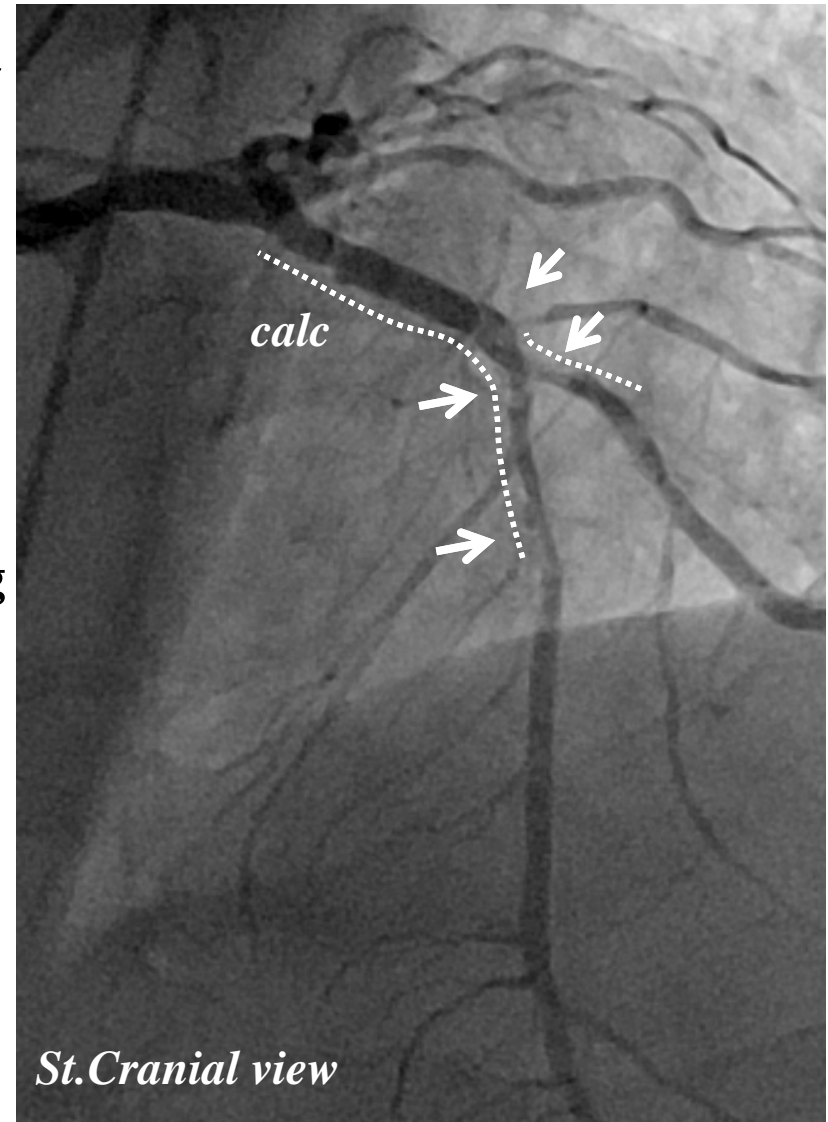
mid. LCX 50%,

prox. RCA 75% → 0%(CB),

mid. RCA 90% → 0%(DEB),

AV branch 90% → 0%(DEB)

LV EF(UCG): 58%



Plain CT

Diffuse Calcified Plaque
LAD Agatston Score: 786

Prox.vessel
4.9 × 4.8mm

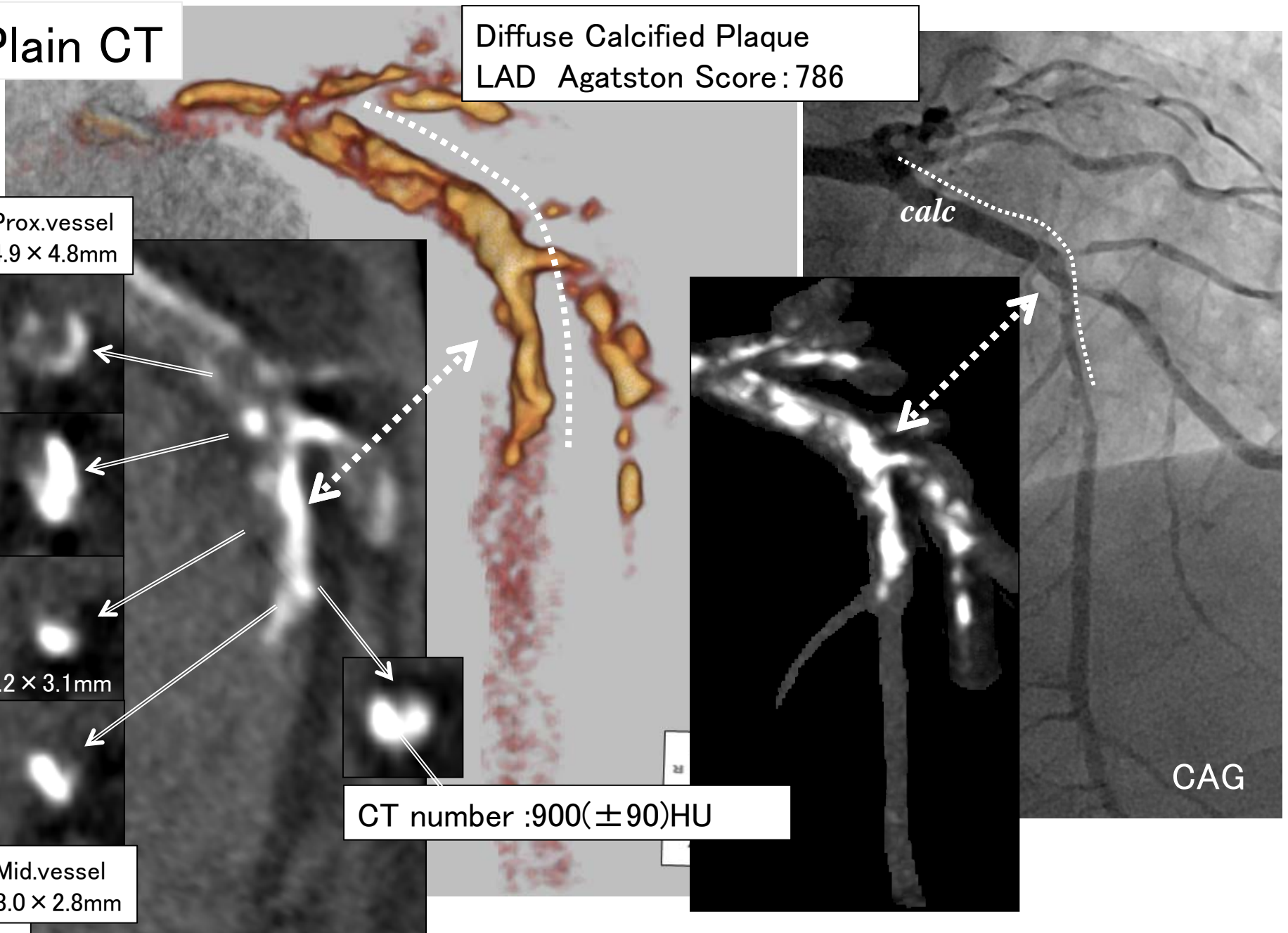
3.2 × 3.1mm

Mid.vessel
3.0 × 2.8mm

CT number :900(± 90)HU

calc

CAG



Case 6 50's male

Target Lesion: LMT bifurcation

Diagnosis: AP

Prior intervention:

'17.01.06 SES (prox. RCA CTO)

Coronary risk factor:

Dyslipidemia, Current smoking

eGFR: 74.2

Syntax score: 46

Final CAG findings: '17.01.06

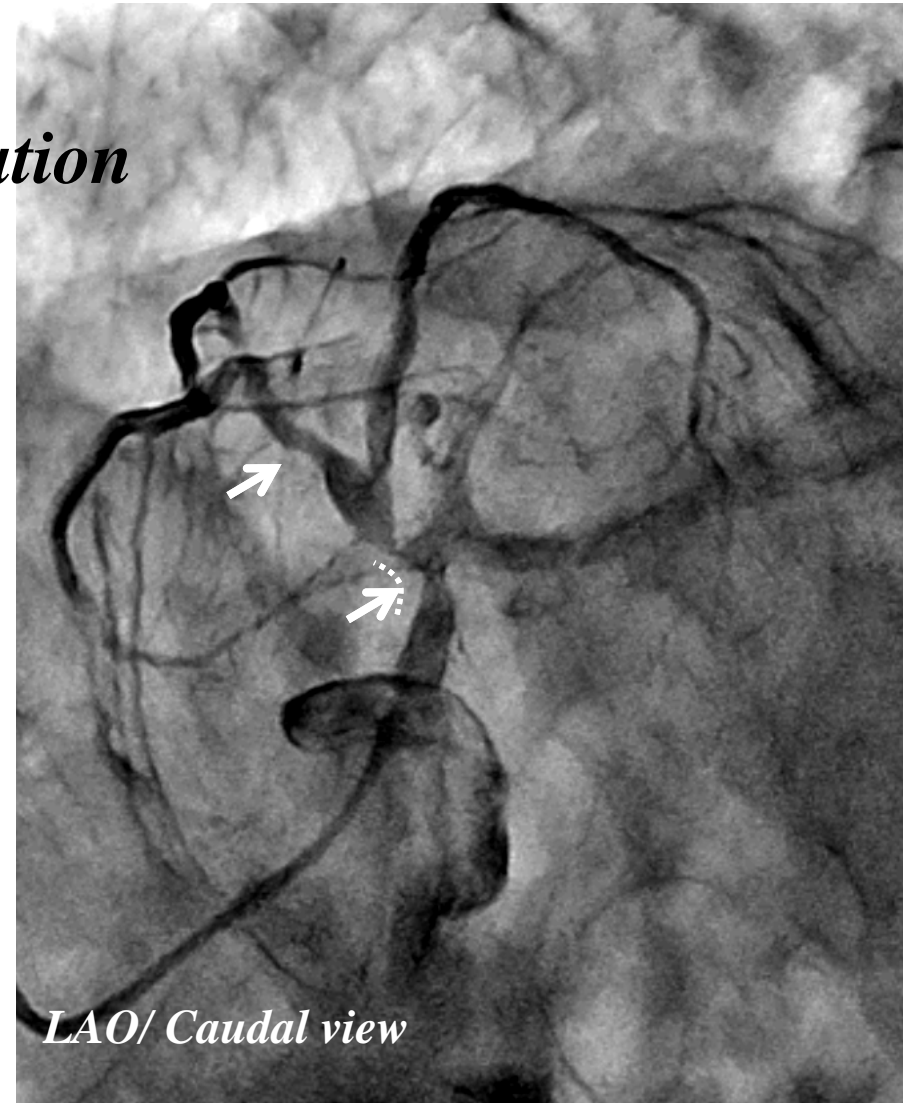
CAG: dis. LMT 75%, ost. LAD 90%,

prox. LAD 90%,

ost. 2nd diagonal 90%,

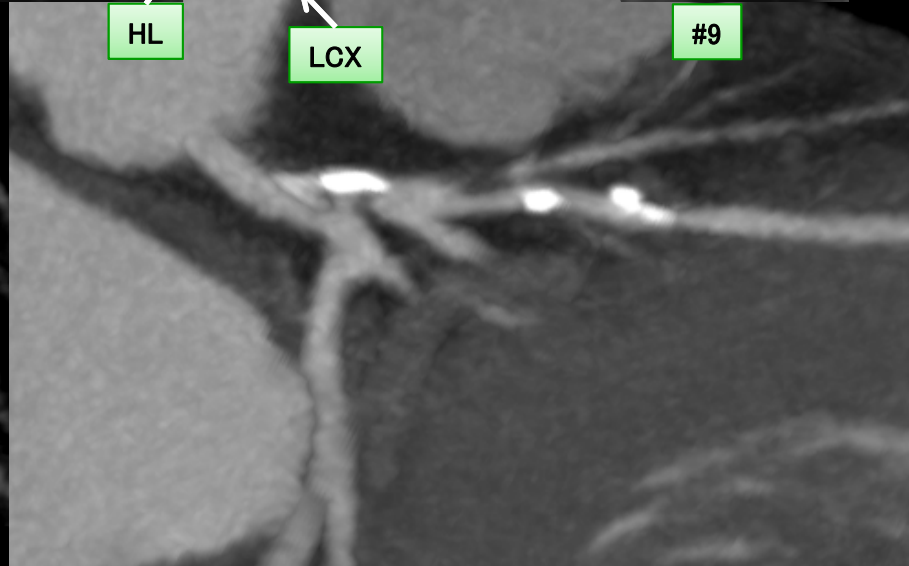
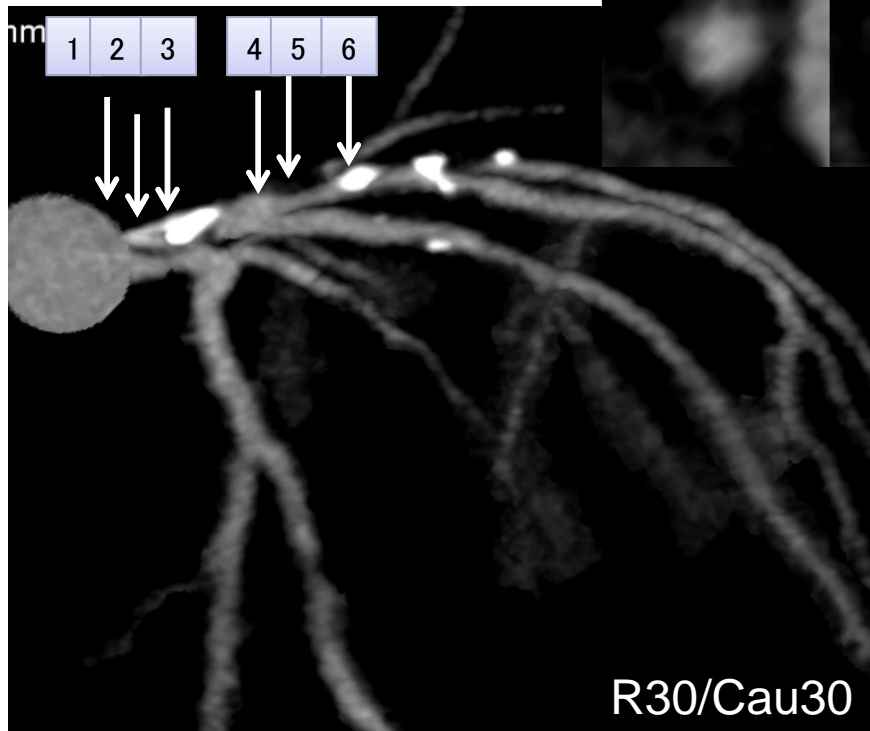
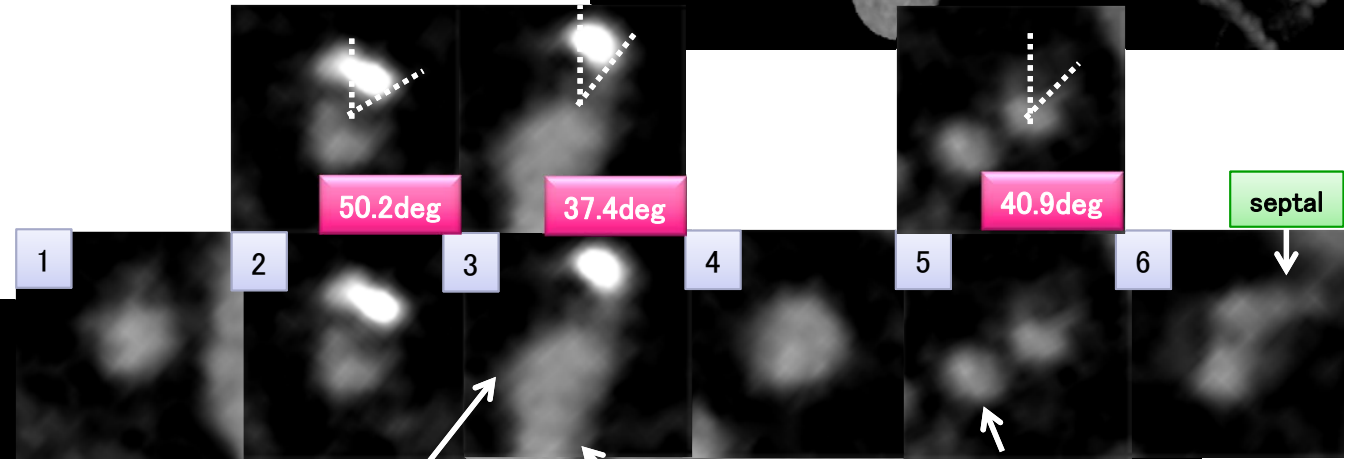
prox. RCA 100% → 0%(Stent)

LV EF(UCG): 58%



Case 6 50's male

Target Lesion: LMT bifurcation

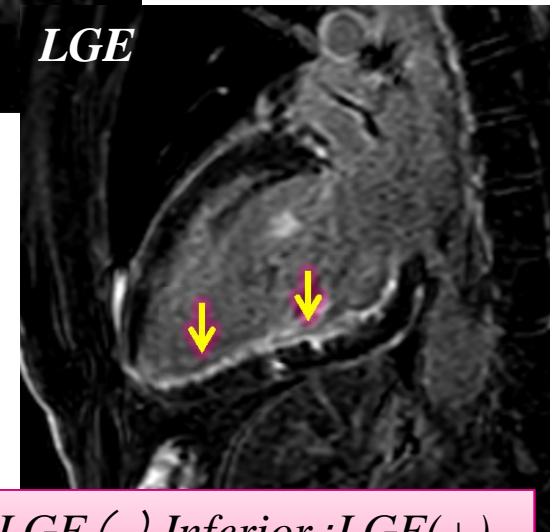
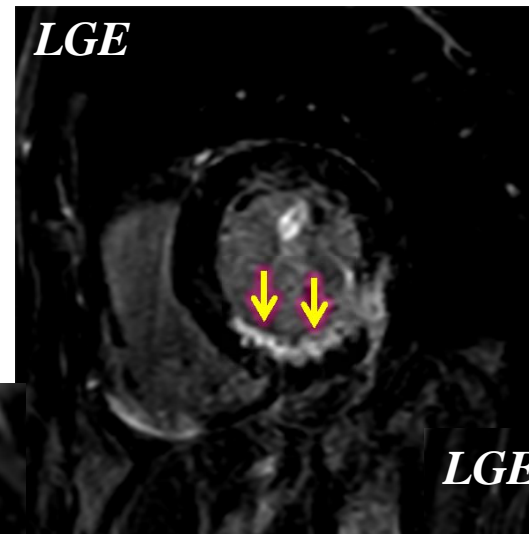


Case 6 50's male

Target Lesion: LMT bifurcation



Antero-septal :Myocardial ischemia (+)



*Antero-septal : LGE (-),Inferior :LGE(+)
Viability(+)*

Case 7 80's female

Target Lesion: LMT bifurcation

Diagnosis: AP, VSD

Prior intervention:

'11.06.30 CB (dis. RCA)

Coronary risk factor:

HT, Dyslipidemia

eGFR: 52.6

Syntax score: 35

Final CAG findings: '17.01.17

CAG: dis. LMT 75-90%, ost. LAD 75%,

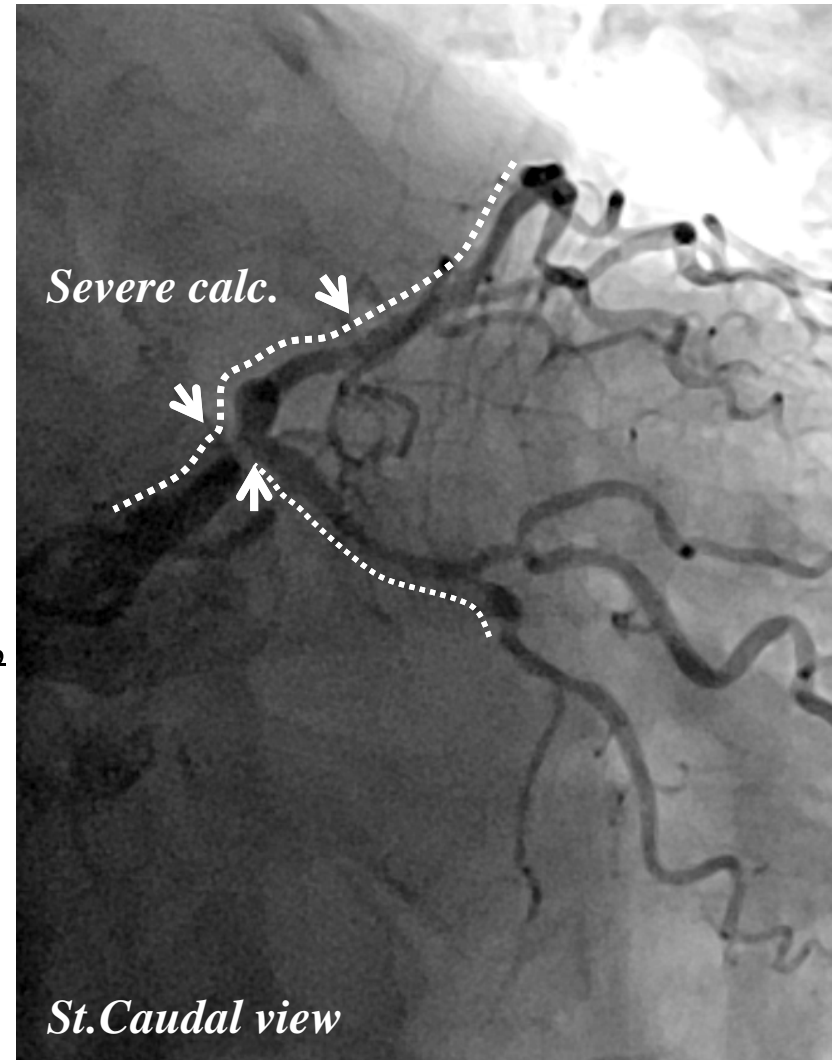
ost. LCX 75%,

mid. LAD 50%, dis. LAD 75%,

1st diagonal 90%, prox. LCX 75%,

OM 75%

LV EF(UCG): 61%

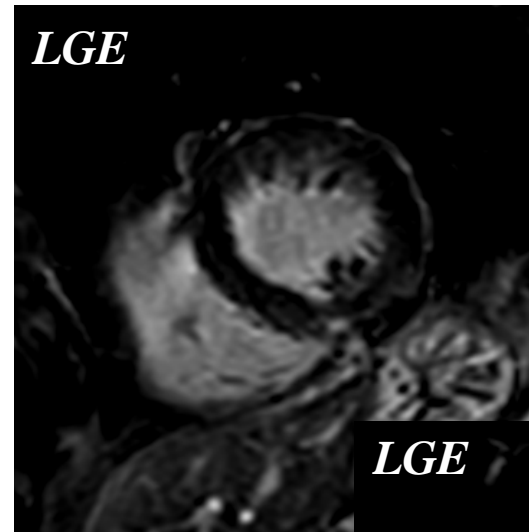


Case 7 80's female

Target Lesion: LMT bifurcation



Myocardial ischemia (-)



LGE (-), Viability(+)

Case 8 70's male

Target Lesion: ost. LCX

Diagnosis: AP, AS(AVA:1.43cm²), CRF

Prior intervention:

'13.02.14 EES (prox. RCA)

'17.01.24 EES (mid. & dis. RCA)

Coronary risk factor:

DM, HT, Dyslipidemia

eGFR: 7.4 (CRF on HD)

Syntax score: 32

Final CAG findings: '17.01.05

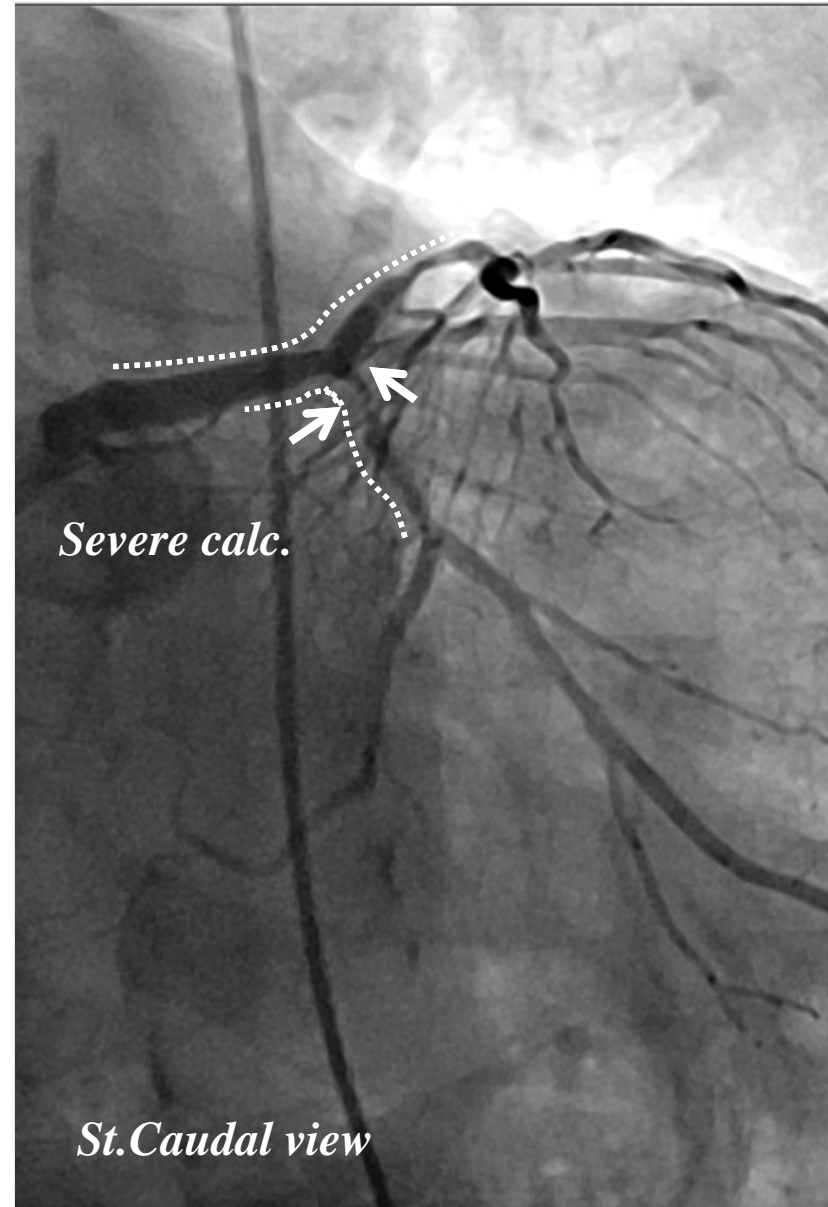
CAG: ost. LCX 90%, HL 75%,

prox. LAD 75%, diagonal 90%,

mid. RCA 75% → 0%(Stent),

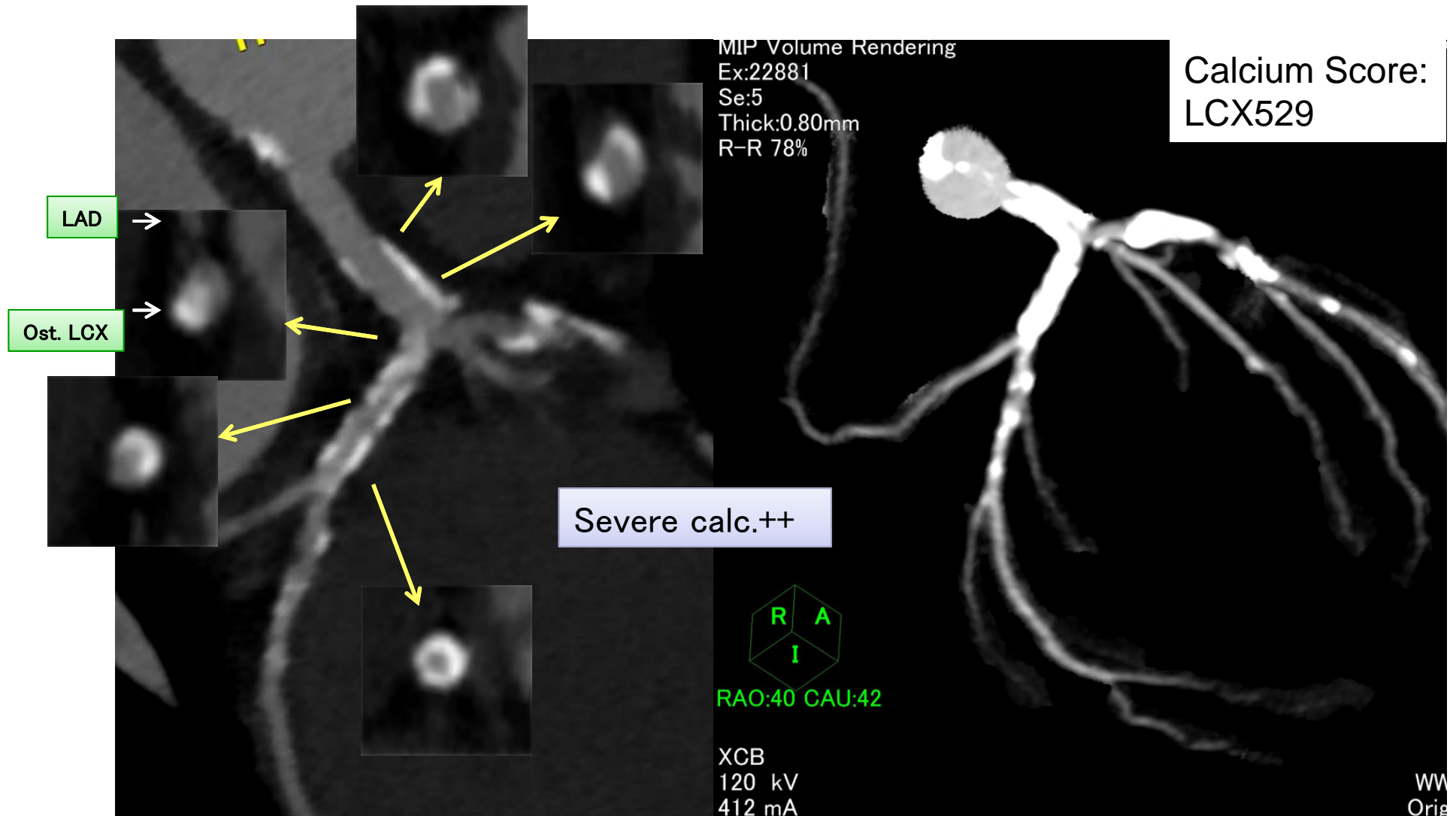
dis. RCA 75% → 0%(Stent)

LV EF(UCG): 54.4%



Case 8 70's male

Target Lesion: ost. LCX



Case 9 60's male

Target Lesion: LCX CTO

Diagnosis: AP, OMI

Prior intervention:

'03.01.26 POBA (dis. RCA AMI)

'03.02.07 BMS (prox. LCX)

Coronary risk factor:

HT, Dyslipidemia

eGFR: 75.8

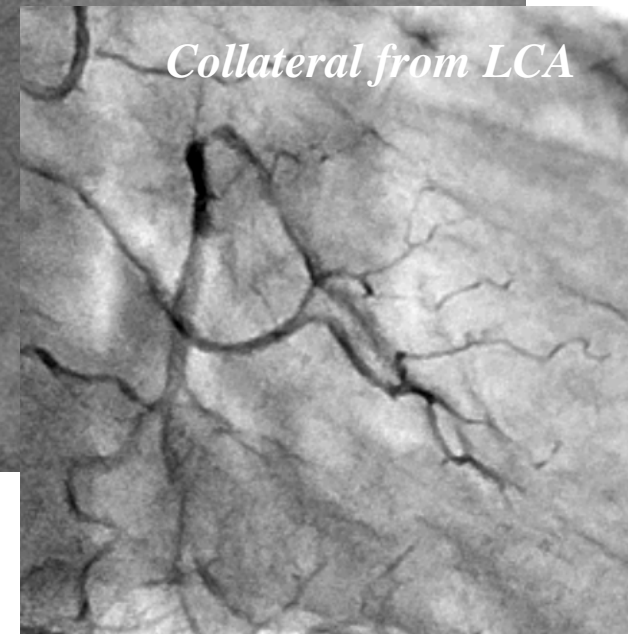
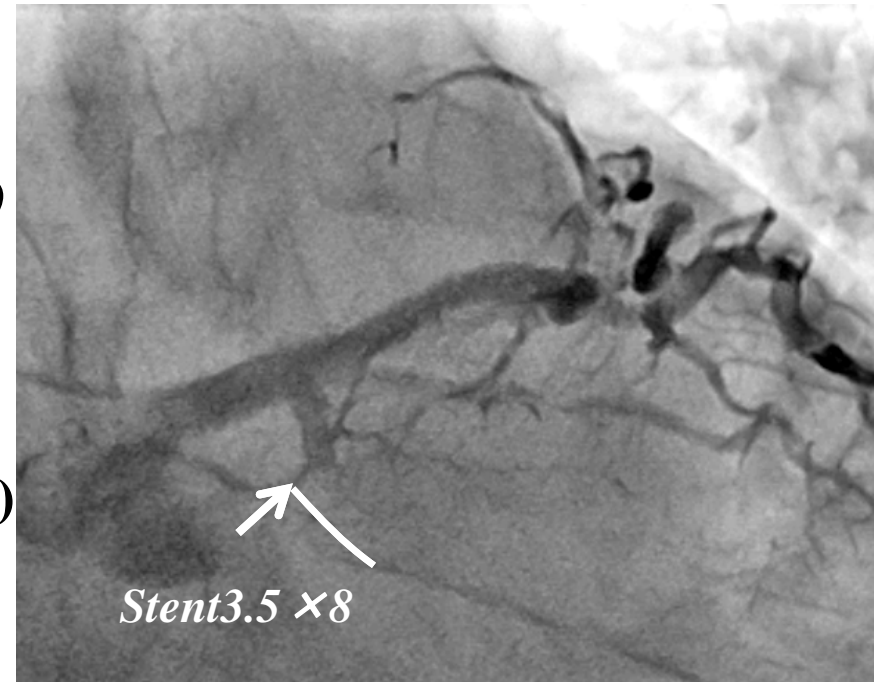
Syntax score: 12.5

Final CAG findings: '17.01.24

CAG: prox. LCX 100%(ISO)

HL 90%

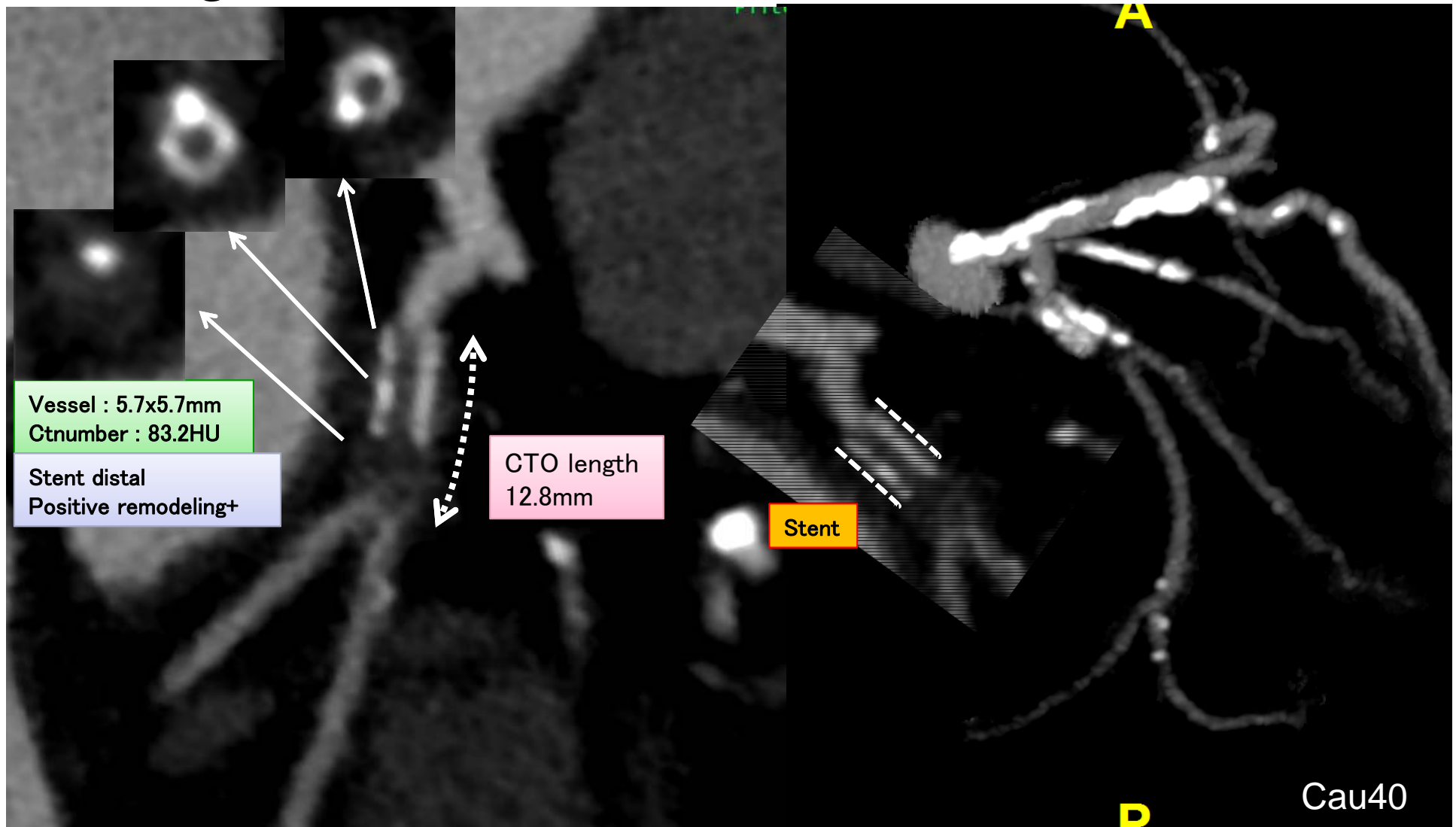
LV EF(UCG): 43.5%



St. Caudal view

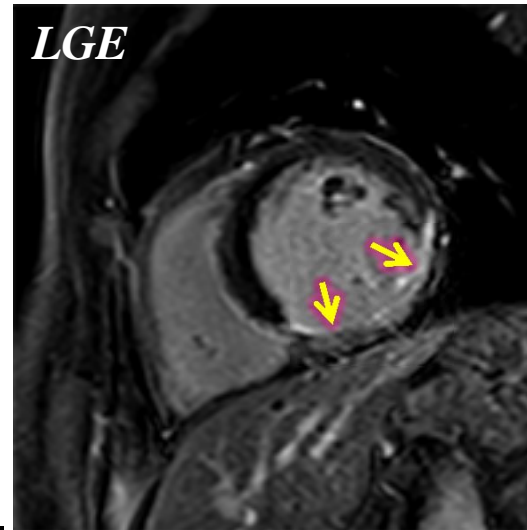
Case 9 70's male

Target Lesion: LCX CTO

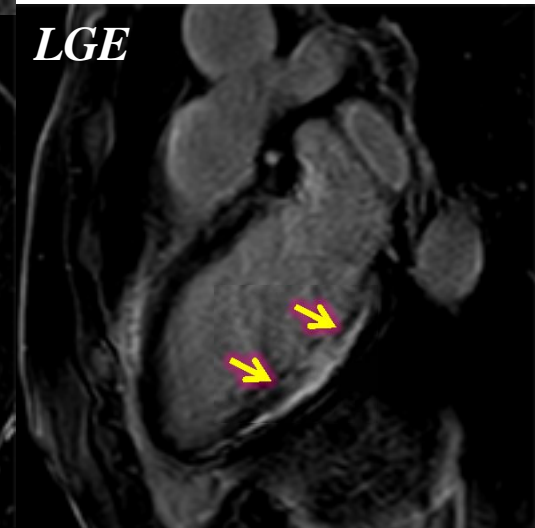
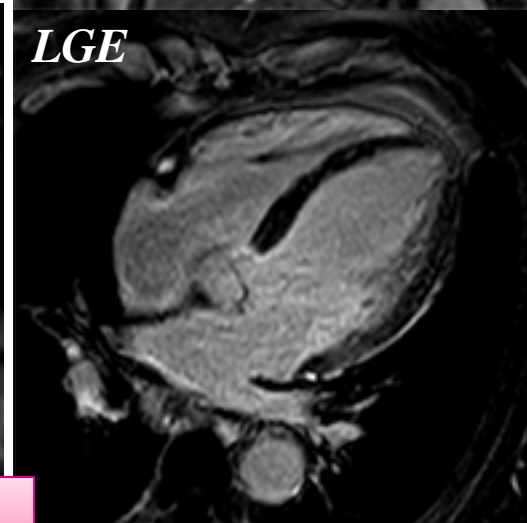


Case 9 70's male

Target Lesion: LCX CTO



*Lateral: LGE(-),
Viability(+)
Inferior LGE(+),
Viability(-)*



Lateral: Myocardial ischemia (+)