



症例集

有為転変

～デバイスの進化、テクニックの深化、オペレーターの真価～

CPAC 2022

COMPLEX PERIPHERAL ANGIOPLASTY CONFERENCE 2022



症例集

11月25日(金)

CPAC 2022

COMPLEX PERIPHERAL ANGIOPLASTY CONFERENCE 2022



Case 1

70's/female

Target Lesion: Rt. CIA calc.

Diagnosis:

PAD, PAF

ABI:

R=0.48, L=1.11

Fontaine: 2

Rutherford: 3

Prior intervention:

Oct. 2022 Ablation
(PAF)

Risk Factor:

DM, HT,

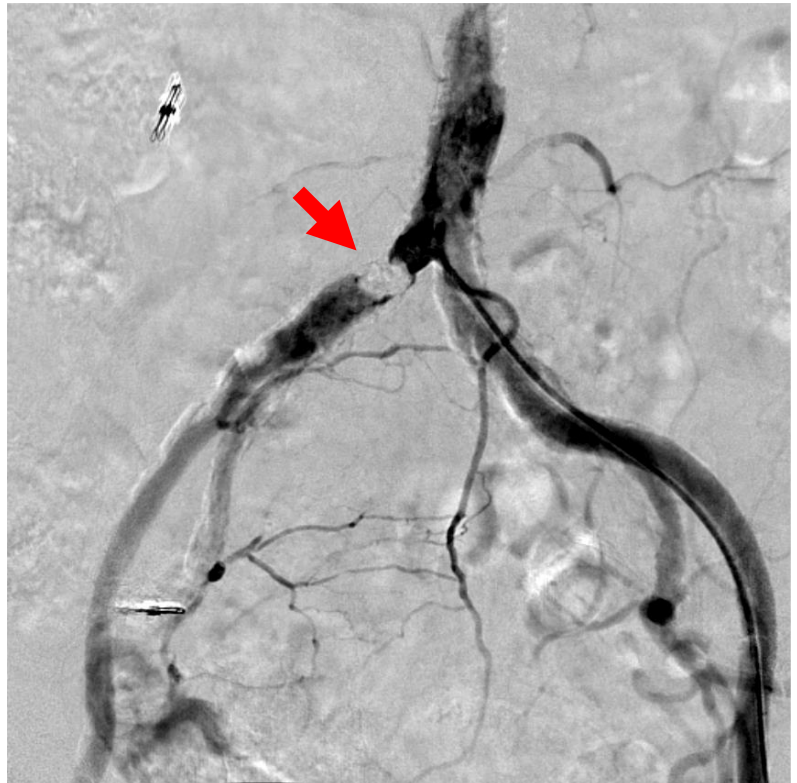
Current smoking

eGFR: 9.0 (CRF on HD)

Angio Findings: Jun. 2022

Rt: CIA 90%

Lt: none



Case 3

80's/male

Target Lesion: Bilat. CIA (calc.)

Diagnosis:

PAD, Post AVR

ABI: R=0.38, L=0.55

Fontaine: 2

Rutherford: 3

Prior intervention:

Jan. 2019 AVR

Risk Factor:

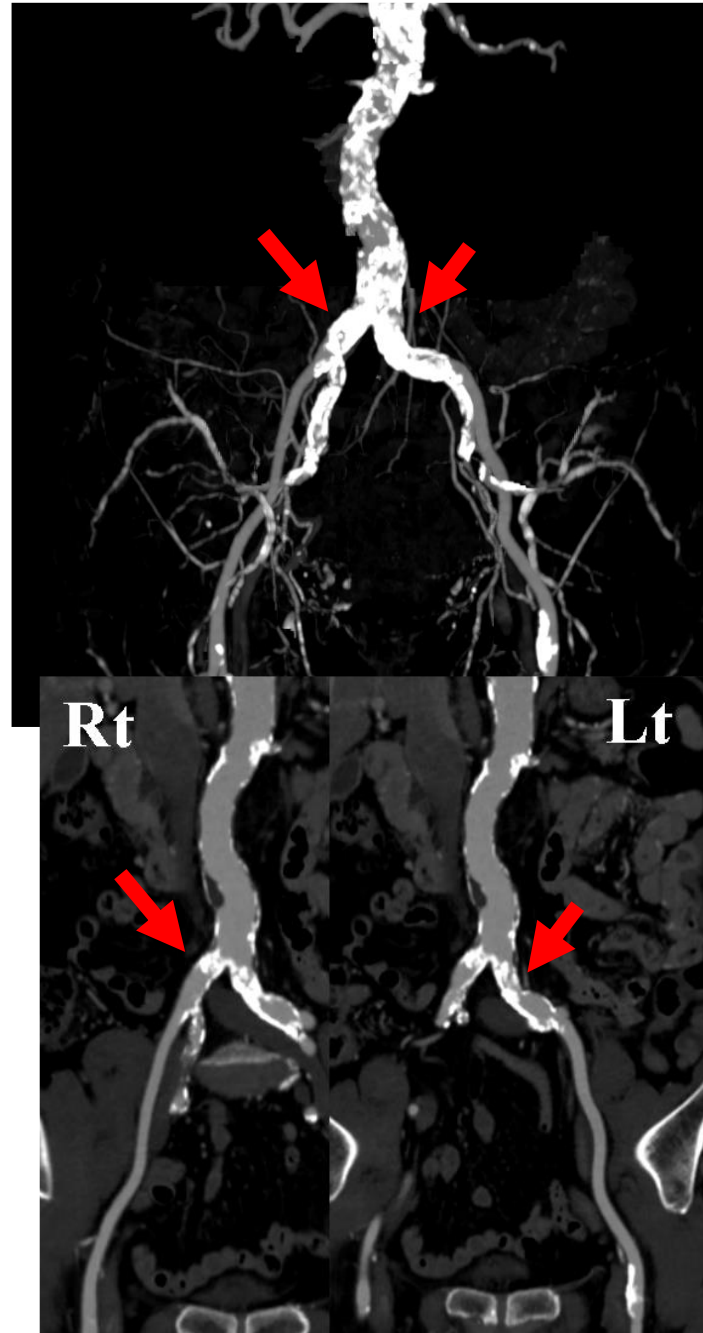
none

eGFR: 6.1 (CRF on HD)

CT Findings: Oct. 2022

Rt: CIA 90%

Lt: CIA 90%,
CFA 50-75%





症例集

11月26日(土)

CPAC 2022

COMPLEX PERIPHERAL ANGIOPLASTY CONFERENCE 2022



Case 4

70's/male

Target Lesion: Rt. EIA CTO

Diagnosis: PAD
ABI: R=0.64, L=0.85

Fontaine: 2
Rutherford: 3

Prior intervention:
Sep. 2022 PCI Stent
(diago.)

Risk Factor:
HT, Dyslipidemia,
Past smoking

eGFR: 48.7

Angio Findings: Nov. 2022
Rt: EIA 100%
Lt: CIA 75%



Case 5

80's/female

Target Lesion: Rt. SFA CTO

Diagnosis:

PAD, AP, post CABG

ABI:

R=error, L=0.48

Fontaine: 2

Rutherford: 3

Prior intervention:

Aug. 2011 CABG

(LITA-LAD,
Ao-SVG-HL)

Risk Factor:

HT

eGFR: 5.9 (CRF on HD)

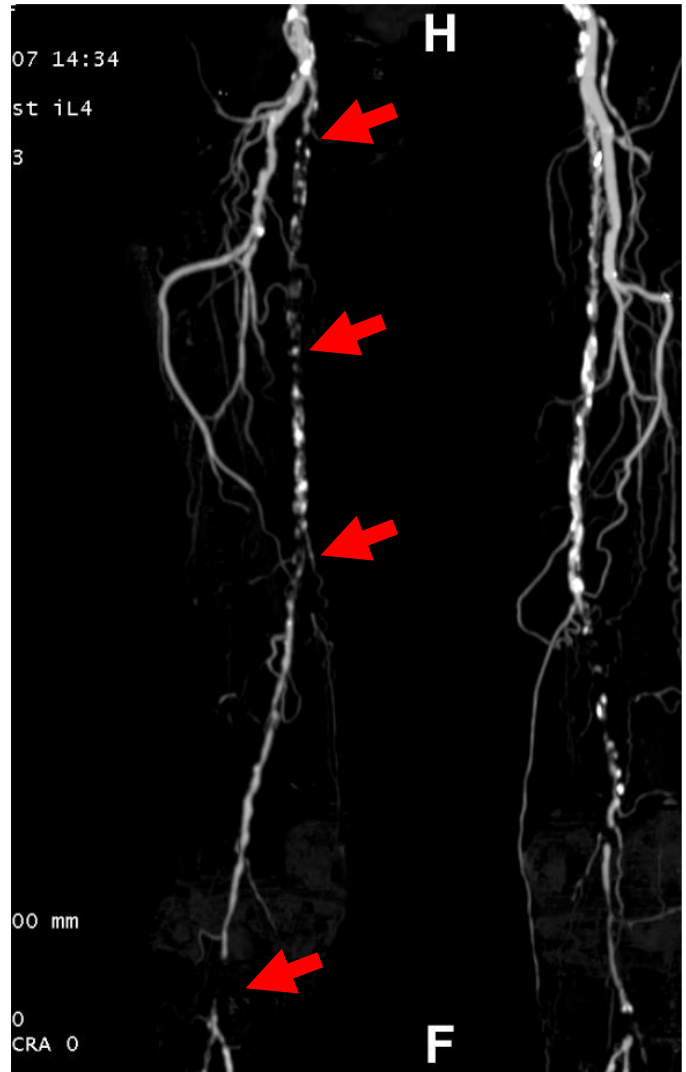
CT Findings: Oct. 2022

Rt: SFA 100%, pop 100%

ATA 100%, TPT 100%

Lt: SFA prox 90%, SFA dis. 100%,

ATA 100%, TPT 100%



Case 6

60's/male

Target Lesion: Lt. SFA CTO

Diagnosis: PAD, CKD
ABI: R=0.61, L=0.49

Fontaine: 2
Rutherford: 3

Prior intervention:
none

Risk Factor:
HT, Dyslipidemia

eGFR: 48.4

CT Findings: Oct. 2022
Rt: SFA 100%
Lt: SFA 100%



Case 7

70's/male

Target Lesion: Rt. CIA CTO

Diagnosis:

PAD, shaggy Ao
ABI: R=0.59, L=0.52

Fontaine: 2
Rutherford: 3

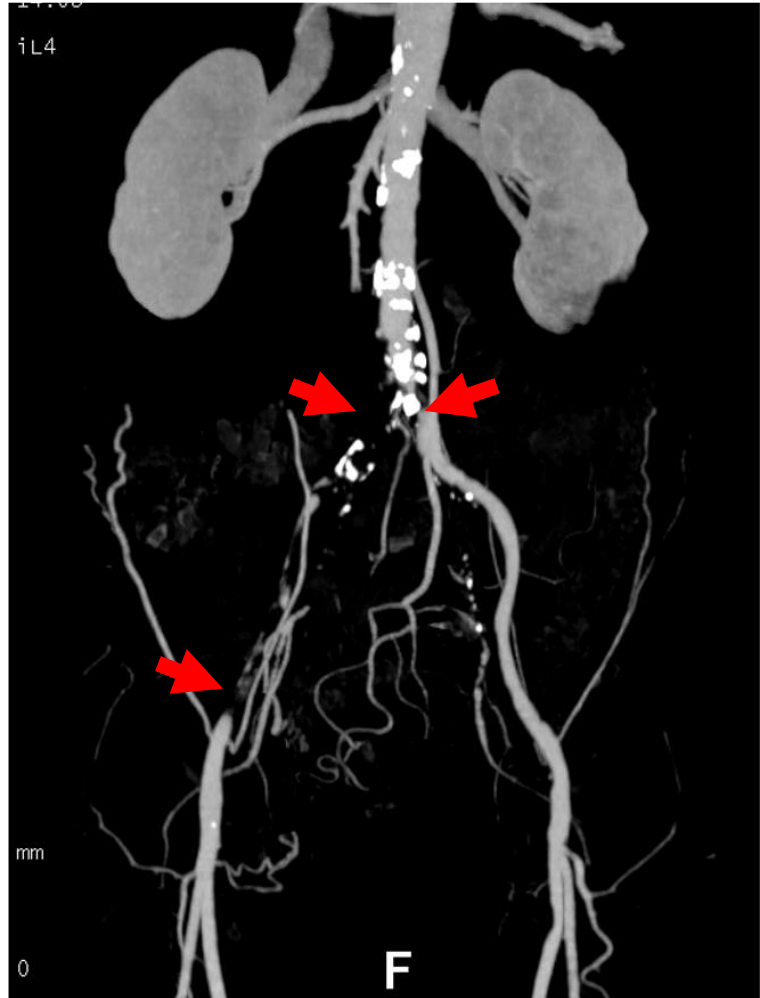
Prior intervention:
none

Risk Factor:
HT

eGFR: 63.8

CT Findings: Oct. 2022

Abd. Ao 75%,
Rt: CIA 100%
Lt: CIA 90%



Case 8

80's/male

Target Lesion: Lt. SFA CTO

Diagnosis: PAD, AP,
post Bentall,
AVR, CABG

ABI: R=0.87, L=0.58

Fontaine: 2

Rutherford: 3

Prior intervention:

Jul. 2001 PCIPOBA (LCX)

Apr. 2004 PCIPOBA
(AV branch)

Feb. 2004 AVR+CABG
(SVG-AV branch)

Apr. 2012 bentall

Risk Factor:

HT, Dyslipidemia,
Current smoking

eGFR: 41.4

CT Findings: Oct. 2022

Rt: No significant stenosis

Lt: SFA 100%



Case 9

70's/male

Target Lesion: Lt. SFA CTO

Diagnosis: PAD, AP
ABI: R=0.50, L=0.53

Fontaine: 2
Rutherford: 3

Prior intervention:

Jun. 2005	PCI Stent (LAD)
Des. 2005	PCI DCA (LAD)
mar. 2019	endarterectomy (Lt. CFA)
Sep. 2020	EVT Stent (Lt. CIA)
	EVT Stent (prox. Lt. SFA)
	EVT DCB (mid. Lt. SFA)
	EVT POBA (Lt. DFA)
May 2021	EVT Stent (Abd. Ao-bilat. CIA)

Risk Factor:
HT, Dyslipidemia

eGFR: 73.7

Angio Findings: Jul. 2022

Rt: SFA 100%

Lt: SFA 100% (ISO)

