



—— 症 例 集 ——

COMPLEX PERIPHERAL ANGIOPLASTY CONFERENCE 2020

CPAC 2020

ONLINE

# Case-1 / 60's male

## Target Lesion: Rt. SFA CTO

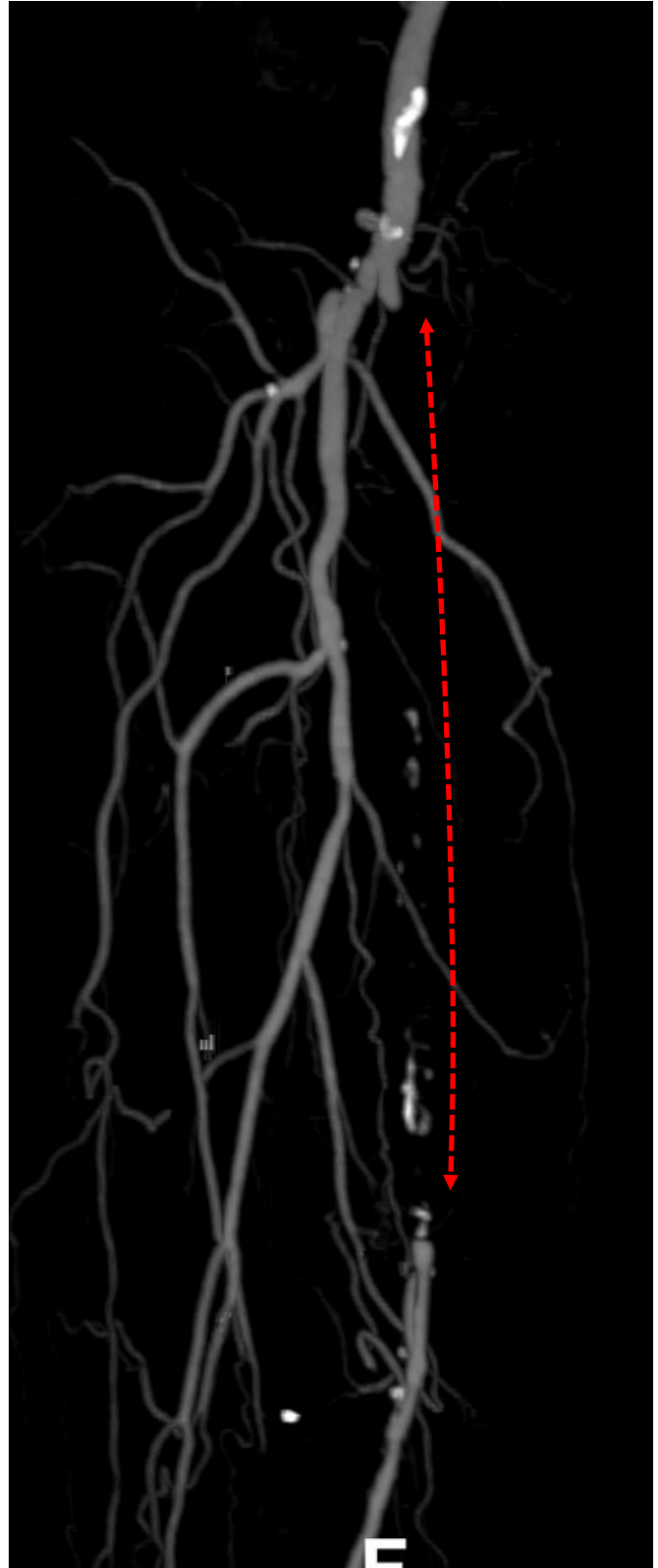


**Diagnosis: PAD, AP**  
**ABI: R=0.47, L=0.72**  
**Fontaine: II**  
**Rutherford: 2**

**Prior intervention:**  
**Nov. 2020 EVT DCB**  
**(Lt. SFA CTO)**

**Risk Factor:**  
**DM, HT, Dyslipidemia,**  
**current smoking**  
**eGFR: 83.1**

**CT Findings: Oct. 2020**  
**Rt: SFA 100%**  
**Lt: SFA 100% ⇒ 0%**



**Case-2 / 70's male**

**Target Lesion: Lt. EIA-CFA CTO**



**Diagnosis: PAD, AP, CKD, shaggy Ao**

**ABI: R=1.07, L=0.60**

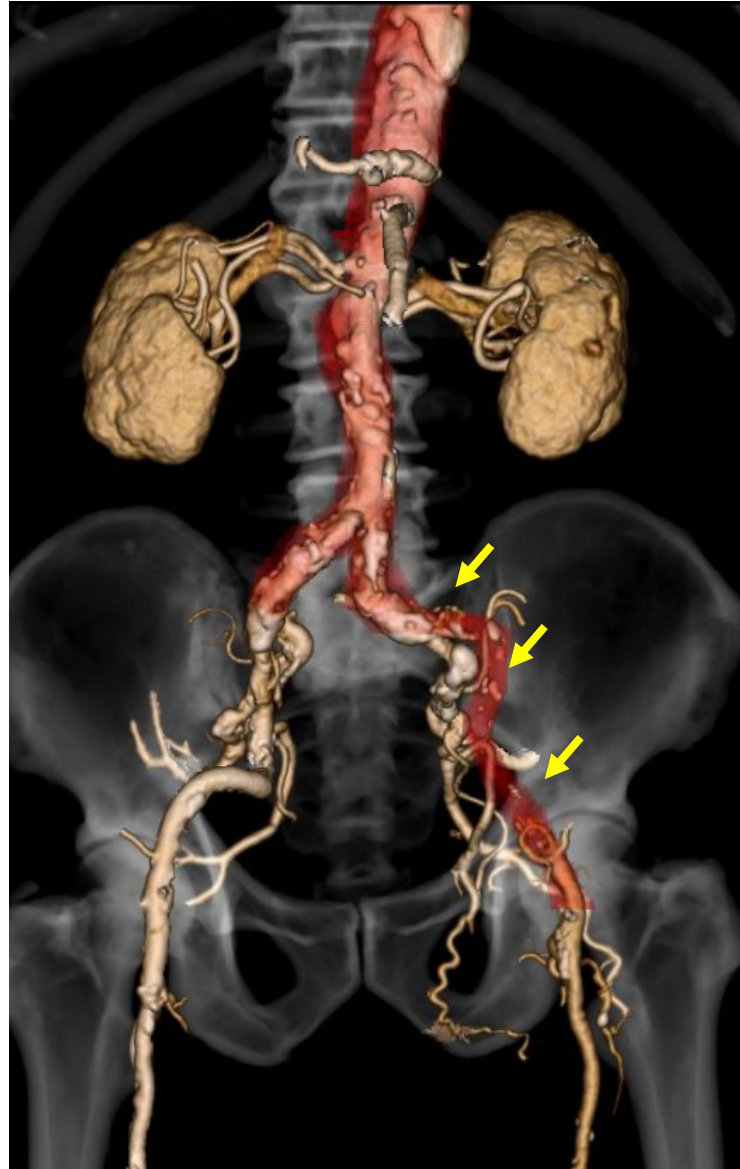
**Fontaine: II**

**Rutherford: 3**

**Prior intervention:  
none**

**Risk Factor:  
DM, HT, Dyslipidemia,  
Past smoking  
eGFR: 35.1**

**CT Findings: Jan. 2020  
shaggy Aorta  
Lt: EIA-CFA 100%**



**Case-3 / 70's male**

**Target Lesion: Rt. CFA-SFA (in stent) CTO**



**Diagnosis: PAD, AP, post CABG**

**ABI: R=error, L=0.62**

**Fontaine: II**

**Rutherford: 2**

**Prior intervention:**

**Apr. 2013 CABG**

**(LITA-LAD, SVG-LCX, RCA)**

**Dec. 2015 EVT (Rt. CIA, Rt. CFA,**

**Lt. EIA, Lt. CFA, Lt. SFA)**

**Feb. 2016 EVT (Rt. SFA CTO, Rt. popliteal)**

**May 2016 EVT (Lt. CFA, Lt. EIA)**

**May 2016 EVT (Rt. popliteal)**

**Risk Factor:**

**DM, Dyslipidemia, past smoking**

**eGFR: 79.6**

**CT Findings: Dec. 2020**

**shaggy Ao**

**Rt: CFA-SFA 100%,**

**popliteal A 75%**

**Lt: SFA 50%, ATA 100%**



**Case-4 / 70's male**

**Target Lesion: Rt. EIA-CFA CTO**



**Diagnosis: PAD, AP, post CABG,  
post F-P bypass**

**ABI: R=error, L=0.52**

**Fontaine: II**

**Rutherford: 4**

**Prior intervention:**

**Apr. 1993 CABG**

**(SVG-LAD, SVG-HL, GEA-RCA)**

**Mar. 2010 PCI (LCX CTO, HL CTO)**

**Apr. 2010 EVT (Rt. CFA & SFA & popliteal)**

**May 2010 EVT (Lt. SFA)**

**May 2012 F-P bypass, BK bypass**

**Risk Factor:**

**DM, HT, Dyslipidemia,**

**eGFR: 51.9**

**Angio Findings: Dec. 2020**

**Abd. Ao ulceration**

**Rt: EIA-CFA 100%,**

**SFA 90%, SFAd-BK 100%**

**Lt: CFA 99%, SFA 99%**



# Case-5 / 70's male

## Target Lesion: Rt. SFA CTO

**Diagnosis: PAD, AP,  
post TAVI**

**ABI: R=0.50, L=0.84**

**Fontaine: II**

**Rutherford: 2**

### **Prior intervention:**

Jul. 2001 PCI(LAD)

Oct. 2001 PCI(LAD)

Dec. 2001 PCI(LMT)

Jan. 2019 PCI(LMT ISR)

Feb. 2019 TAVI

EVT stent(Lt. EIA)

Nov. 2020 EVT stent(Lt. EIA)

EVT DCB(Lt. SFA CTO)

Nov. 2020 PCI(LMT ISR)

Nov. 2020 PCI(LAD ISR)

### **Risk Factor:**

**HT, current smoking**

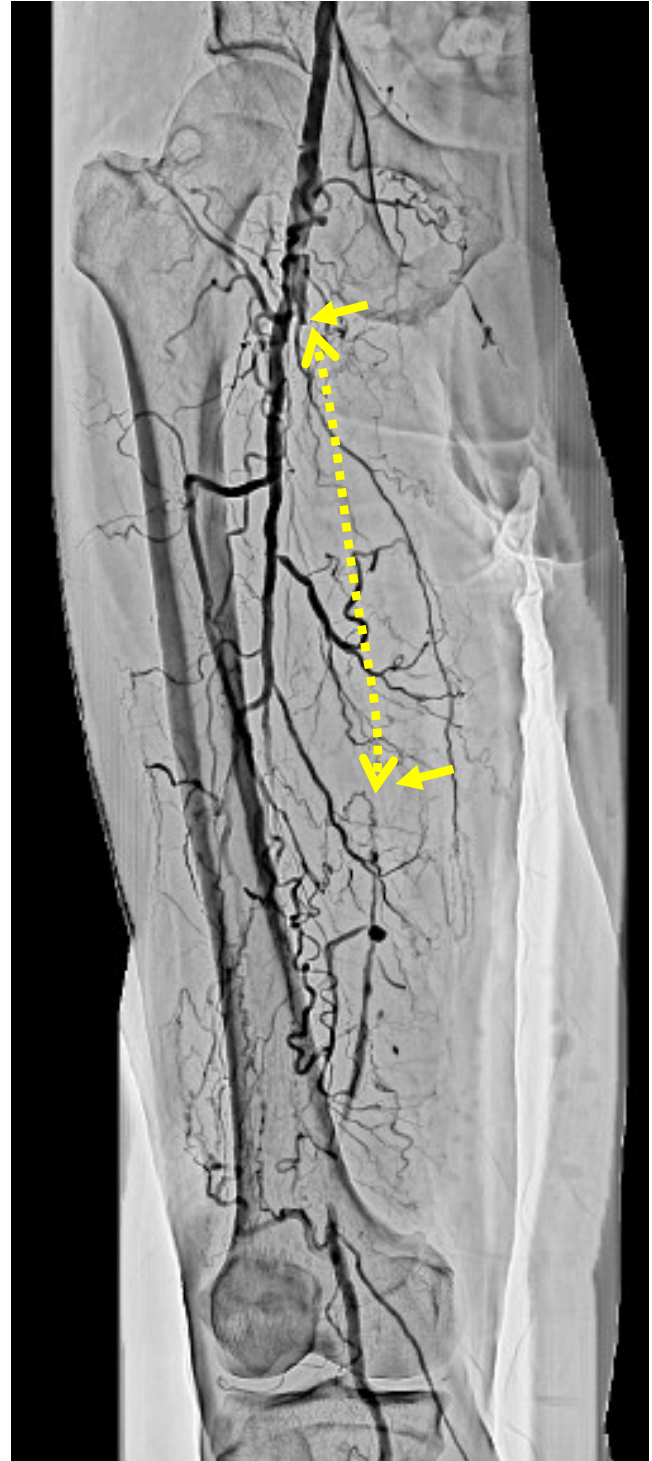
**eGFR: 57.9**

### **Angio Findings: Oct. 2020**

**Rt: SFA 100%**

**Lt: EIA 90% ⇒ 0%,**

**SFA 100% ⇒ 0%**



**Case-6 / 80's female**  
**Target Lesion: Rt. SFA calc.**



**Diagnosis: PAD, AP, AS**  
**CRF on HD**

**ABI: R=0.52, L=0.79**

**Fontaine: II**

**Rutherford: 2**

**Prior intervention:**

Dec. 2018 EVT DCB (Lt. SFA CTO)

Nov. 2020 EVT DCB (Lt. SFA reste)

**Risk Factor:**

HT, Dyslipidemia

**eGFR: 4.3 (CRF on HD)**

**Angio Findings: Oct. 2020**

shaggy Aorta

Rt: SFA subtotal

Lt: SFA 90%  $\Rightarrow$  0%

